

Celebrating **20 YEARS** of  
**life-enriching Shakespeare**  
in Winona, Minnesota

2023



6/20/23

—  
7/30/23

**AS YOU LIKE IT**

**IMBROGLIO**

by Melissa Maxwell  
(World Premiere)

**THE WINTER'S TALE**

**GRSF.ORG | (507) 474-7900**



**GREAT  
RIVER  
SHAKESPEARE  
FESTIVAL**

**20<sup>TH</sup> ANNIVERSARY**



# MEET WINONA STATE



Winona State is proud to partner with our community to support the Great River Shakespeare Festival and the arts in Winona.

**\$7M+**  
awarded in  
scholarships  
each year

**93%**  
of graduates  
get a job in  
their field

**#1** University  
in the Minnesota  
State system.  
- US News & World  
Report '22-'23

MEET WHAT'S POSSIBLE  
at [winona.edu](http://winona.edu)



It is required you do  
awake your faith...

# WELCOME

It took a lot of faith for community leaders to invite Paul Barnes, Alec Wild, and Mark Hauck to start a Shakespeare festival in Winona. Twenty years later, that faith has been rewarded. Great River Shakespeare Festival sparked a renaissance that now includes multiple world class arts organizations including the Minnesota Beethoven Festival, Frozen River Film Festival, Mid West Music Fest, Minnesota Marine Art Museum and more, as well as a newly thriving collection of restaurants and shops in a vibrant downtown. There has never been a better time to live, visit, and play in Winona.

Twenty years in, it still takes a lot of faith - faith that is strengthened by our history.

For Winona at the turn of the century, faith that a major festival could thrive grew from its history. A look around Winona - at the architecture, the stained glass, the music scene, and the local artists - confirms that the arts and a commitment to a high quality of life have thrived alongside innovative businesses and educational institutions since its founding.

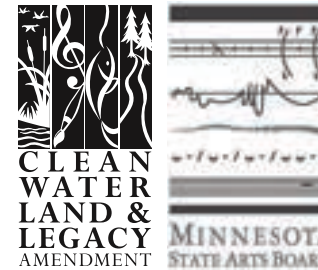
GRSF has always been committed to deeply exploring the texts of the plays we produce. We take the time to question, to examine, and to understand the play. At its core, this allows us to tell the story so that you, the audience, can clearly understand as well. Shakespeare's plays are full of nuanced insight into the human experience which is revealed only through careful and specific attention to every word.

This anniversary season, we renew that commitment to the text, and we do it, as is also our tradition, by innovating and changing. We are moving the audience into a smaller, more intimate arrangement to get you closer to the action and focused on the subtlety of the language. On our season this year is a world premier, *Imbroglia* by one of our core artists Melissa Maxwell, that reflects our world through well crafted, modern language. We return to *The Winter's Tale* for the first time in 20 years - a play from late in Shakespeare's life that explores grace in complex poetry. And Tarah Flanagan, who has inhabited the words of Rosalind, Celia, and more in multiple productions, directs *As You Like It* - a comedy about love in all its forms.

We are presenting three radically different looks at the human condition. In some, you may see your own life which might lead to finding community in shared experience. In others, you may find empathy for lives different than your own. In all, we promise to "...hold the mirror up to nature..." and to spark conversation about what is truly meaningful in our shared journey on this earth.

We have faith that we build community in these conversations, and that faith has been affirmed for 20 seasons. Thank you for being here.

**DOUG SCHOLZ-CARLSON**  
Artistic Director



This activity is made possible by the voters of Minnesota through a Minnesota State Arts Board Operating Support grant, thanks to a legislative appropriation from the Arts & Cultural Heritage Fund.

Additional annual support comes from the Margaret H. and James E. Kelley Foundation.

**SEASON SPONSOR:**



**TECHNOLOGY SPONSOR:**

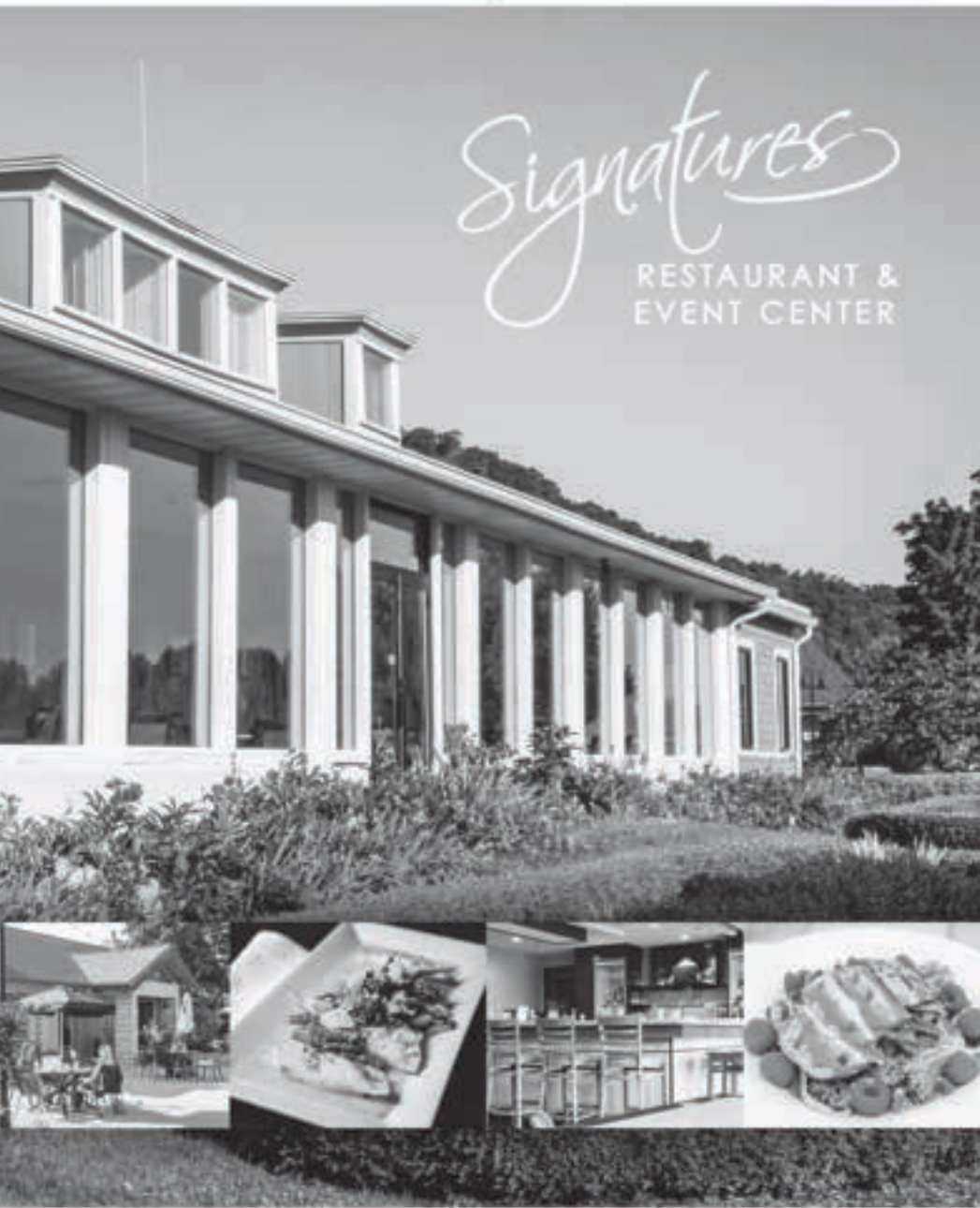


Cover Photo: De'Onna Prince and Tarah Flanagan in the 2016 production of *As You Like It*. Photo by Dan Norman.



**DINE. PLAY. RELAX.**  
*Dine. Play. Relax.*

*Signatures*  
RESTAURANT &  
EVENT CENTER



22852 COUNTY RD 17, WINONA, MN 55987  
507-454-3767 [www.signatureswinona.com](http://www.signatureswinona.com) @signatureswinona

**WELCOME**  
from the  
Board Chair



## Welcome to our 20th season! We're happy you're here to celebrate with us.

Fate, and faith, have made the Great River Shakespeare Festival an integral part of the Winona community for all these years. Fate, that brought the first group of people together in this beautiful city. Faith, that the Festival would be well-received. And it has been, and continues to be.

We have been entertaining and enriching people's lives for 20 seasons now. That's actually an integral part of our mission statement... "to enrich people's lives by creating dynamic, clearly understood productions of Shakespeare and other playwrights who celebrate the spoken word."

This year, we're mixing things up a bit – embracing the new, and remembering our past. *The Winter's Tale* was part of the very first season, and we return to that, directed by Artistic Director Doug Scholz-Carlson. *As You Like It* is directed by long-time company member Tarah Flanagan. *Imbroglia*, written and directed by Co-associate Artistic Director Melissa Maxwell, makes its world premiere right here on ourstage.

Speaking of stage, we hope you enjoy being up-close and personal with the company members. As a nod to the days of Shakespeare himself, audience members will be seated around the actors on three sides.

As always, everyone involved with the Festival has put their heart and soul into this season. From costumes to stage design to music to acting...this is going to be a great season.

Beyond the plays, there are several ways to enjoy the Festival. Every night before the performance, the Professional Understudy Company will present a variety of scenes from Shakespeare's works. These free shows begin about 35 minutes before the play on the green next to the Performing Arts Center. On Friday and Saturday evenings, join us for ice cream socials where you can visit with cast, crew, and fellow audience members. Thursday evenings, feel free to meet the cast after the show during the Post-Show-Talk-Back sessions. And on Sunday mornings, hang out with company members and learn more about them and the shows during the Company Conversations at Blooming Grounds Coffee Shop.

We're thrilled that you're part of our 20th season. Whether this is your first time here, or you've been enriched by the Festival for all these years, we are so appreciative of you. It takes all of us to make it happen - audience members, sponsors, donors, the Friends of Will, and the entire creative company.

Thank you for being here as we celebrate the spoken word and share it with people from Winona, around the country, and across the globe.

On behalf of the Board of Directors, thank you for continuing to make the Great River Shakespeare Festival possible.

Gratefully, **BETH FORKNER MOE**

Chair of the Board of Directors of the Great River Shakespeare Festival



# AS YOU LIKE IT

By **WILLIAM SHAKESPEARE**

## CREATIVE TEAM

Director .....Tarah Flanagan  
Voice and Text Coach .....Katie Cunningham  
Scenic & Properties Designer .....Ivy Treccani  
Costume Designer .....John Merritt  
Lighting Designer .....Avery Reagan  
Composer/Music Director .....Duncan McIntyre  
Wig & Makeup Designer .....Kenyana Trambles  
Intimacy Director .....Tonia Sina  
Fight Choreographer .....Benjamin Boucvalt  
Production Stage Manager .....Madison Tarchala\*  
Assistant Stage Manager .....Lauren Peters  
Costume Design Assistant .....Brittany Staudacher

“ Good shepherd, tell this youth  
what 'tis to love...”

AS YOU LIKE IT  
IS SPONSORED BY:  
**KATHY & DAVE  
CHRISTENSON**



\* Denotes membership in Actors' Equity Association, the union of professional stage actors and stage managers in the USA.

## CAST

### The Court

Celia .....Eliana Rowe  
Rosalind .....Ashley Bowen  
Touchstone .....Emily Fury Daly\*  
Duke Frederick .....Benjamin Boucvalt\*  
Le Beau .....Alegra Batara  
Court Lord .....Adeyinka Adebola\*  
Charles the Wrastler .....Christopher Gerson\*

### The Household of Sir Rowland de Boys

Orlando .....Chauncy Thomas\*  
Oliver .....William Sturdivant\*  
Adam .....Michael Fitzpatrick\*  
Denis .....Adeyinka Adebola\*  
Jacque de Boys .....Duncan McIntyre\*

### In Exile

Duke Senior .....De'Onna Prince  
Amiens .....Duncan McIntyre\*  
Jaques .....Christopher Gerson\*

### The Forest of Arden

Corin .....Michael Fitzpatrick\*  
Silvius .....Adeyinka Adebola\*  
Phoebe .....Alegra Batara  
Audrey .....Benjamin Boucvalt\*  
Sir Oliver Martex .....William Sturdivant\*  
Willa .....De'Onna Prince

*Understudies never substitute for listed players unless a  
specific announcement is made at the time of the performance.*

Adeyinka Adebola\* (Orlando), Tarah Flanagan\* (Denis, Court Lord, Jaques, Willa,  
Jacque de Boys, Le Beau), Christopher Gerson\* (Duke Frederick),  
Brock Looser (Oliver, Sir Oliver Martex, Touchstone), China Pharr (Celia, Phoebe),  
De'Onna Prince (Rosalind), Eliana Rowe (Amiens), Daniel Stewart (Silvius, Audrey, Charles)

## CREW

Production Managers .....Joseph Millett & Karl Gfall  
Asst. Production Manager .....Ella Egan  
Fight Captain .....Benjamin Boucvalt\*  
Props Artisans .....Karl Gfall, Gamma Lister, & Skylar Revell  
Drafter/Carpenter/Painter/Rigger .....Alejandro Treccani  
Carpenter .....Carl Schack  
Master Electrician .....David O. Smith  
Lighting Design Assistant .....James Balistreri  
Lighting Apprentice .....Beth Fritton  
Sound Supervisor .....Jeff Polunas  
Sound Apprentice .....Landen Norton  
Costume Shop Manager .....Stephanie Jones  
Lead Draper .....Heather Hirvela  
First Hand .....Dayne Sabatos  
Costume Crafts .....Sydney Martin  
Stitchers .....Sparrow Matthews & Maya Schaefer-Fiello  
Wardrobe Supervisor .....Carrie Wieland  
Wardrobe Apprentices .....Chloe Kummer & Erika Warrix



# IMBROGLIO

world premiere

By **MELISSA  
MAXWELL**

## CREATIVE TEAM

Director .....Melissa Maxwell\*\*  
 Voice and Text Coach .....Katie Cunningham  
 Scenic & Properties Designer .....Ivy Treccani  
 Costume Designer .....John Merritt  
 Lighting Designer .....James Balistreri  
 Sound Designer .....Scott O'Brien  
 Wig & Makeup Designer .....Kenya Trambles  
 Intimacy Director .....Tonia Sina  
 Fight Choreographer .....Benjamin Boucvalt  
 Dialect Coach .....Tarah Flanagan  
 Production Stage Manager .....Madison Tarchala\*  
 Stage Manager .....Abbi Hess  
 Assistant Stage Manager .....Nicholas Carlstrom  
 Costume Design Assistant .....Brittany Staudacher

imbroglio [ im-brohl-yoh ] *noun:*  
*an extremely confusing or  
 complicated situation*

The author would like to thank Great River Shakespeare Festival for this tremendous opportunity and the following individuals and institutions for their support in the development of this play: Susan and John McKelvey, Char & Bill Carlson, Claudia Barnett (MTSU's In Process workshop), Jennifer Egan, Kent Thompson, Deborah Savadge (The Playwrights Gallery), Eliza Ventura (Cap 21), L. Trey Wilson, Judy Tate, Peter Almeida, Sherri DaCruz and Lisa Jaye.

This project is  
**generously supported by**  
 an anonymous gift in memory  
 of John & Janet.

**IMBROGLIO  
 IS ALSO SPONSORED BY:  
 CHAR & BILL  
 CARLSON**

## CAST

Herman .....Chauncy Thomas\*  
 Viola .....Ashley Bowen  
 Lou .....William Sturdivant\*  
 Betty .....Eliana Rowe  
 Manny .....Adeyinka Adebola\*

*Understudies never substitute for listed players unless a specific announcement is made at the time of the performance.*  
 China Pharr (Viola, Betty), Daniel Stewart (Herman, Lou, Manny)

## CREW

Production Managers .....Joseph Millett & Karl Gfall  
 Asst. Production Manager .....Ella Egan  
 Fight Captain .....Benjamin Boucvalt\*  
 Props Artisans .....Karl Gfall, Gamma Lister, & Skylar Revell  
 Drafter/Carpenter/Painter/Rigger .....Alejandro Treccani  
 Carpenter .....Carl Schack  
 Lighting Design Mentor .....Avery Reagan  
 Lighting Apprentice .....Beth Fritton  
 Master Electrician .....David O. Smith  
 Sound Supervisor .....Jeff Polunas  
 Sound Apprentice .....Landen Norton  
 Costume Shop Manager .....Stephanie Jones  
 Lead Draper .....Heather Hirvela  
 First Hand .....Dayne Sabatos  
 Costume Crafts .....Sydney Martin  
 Stitchers .....Sparrow Matthews & Maya Schaefer-Fiello  
 Wardrobe Supervisor .....Carrie Wieland  
 Wardrobe Apprentices .....Chloe Kummer & Erika Warrix



\* Denotes membership in Actors' Equity Association, the union of professional stage actors and stage managers in the USA.  
 \*\* Denotes membership in Stage Directors and Choreographers Society.

# THE WINTER'S TALE

By WILLIAM SHAKESPEARE

## CREATIVE TEAM

Director .....Doug Scholz-Carlson  
 Voice and Text Coach .....Katie Cunningham  
 Scenic & Properties Designer .....Ivy Treccani  
 Costume Designer .....Sarah Bahr\*\*  
 Lighting Designer .....Avery Reagan  
 Sound Designer .....Jeff Polunas\*\*  
 Wig & Makeup Designer .....Kenya Trambles  
 Intimacy Director .....Tonia Sina  
 Stage Manager .....Alexander Carey\*  
 Assistant Stage Manager .....Kristen Benner  
 Costume Design Assistant .....Jenna Jamison  
 Puppetry Consultants .....Timmy Turner & Stephanie Jones

## CAST

Actor 1 who plays Leontes.....Benjamin Boucvalt\*  
 Actor 2 who plays Hermione & Clown.....Emily Fury Daly\*  
 Actor 3 who plays Polixenes & Antigonus.....Christopher Gerson\*  
 Actor 4 who plays Paulina & Old Shepherd.....De'Onna Prince  
 Actor 5 who plays Camillo & Cleomones.....Michael Fitzpatrick\*  
 Actor 6 who plays Perdita, Mamillius, Emilia, & Mariner .....Alegra Batara  
 Actor 7 who plays Florizel, Servant, & Lord.....Duncan McIntyre\*  
 Actor 8 who plays Time & Autolycus.....Tarah Flanagan\*

*Understudies never substitute for listed players unless a specific announcement is made at the time of the performance.*

Alegra Batara (Actor 2), Brock Looser (Actor 6, 7, & 8), Duncan McIntyre\* (Actor 5), Eliana Rowe (Actor 4), William Sturdivant\* (Actor 1), Chauncy Thomas\* (Actor 3),

## CREW

Production Managers .....Joseph Millett & Karl Gfall  
 Asst. Production Manager .....Ella Egan  
 Fight Captain .....Benjamin Boucvalt\*  
 Props Artisans .....Karl Gfall, Gamma Lister, & Skylar Revell  
 Drafter/Carpenter/Painter/Rigger .....Alejandro Treccani  
 Carpenter .....Carl Schack  
 Master Electrician .....David O. Smith  
 Lighting Design Assistant .....James Balistreri  
 Lighting Apprentice .....Beth Fritton  
 Sound Apprentice .....Landen Norton  
 Costume Shop Manager .....Stephanie Jones  
 Lead Draper .....Heather Hirvela  
 First Hand .....Dayne Sabatos  
 Costume Crafts .....Sydney Martin  
 Stitchers .....Sparrow Matthews & Maya Schaefer-Fiello  
 Wardrobe Supervisor .....Carrie Wieland  
 Wardrobe Apprentices .....Chloe Kummer & Erika Warrix



“Resolve you for more amazement”

THE WINTER'S TALE  
 IS SPONSORED BY:



Special thanks to Chelsea M. Warren, NYU Tisch School of the Arts Department of Design for Stage and Film, Indiana Repertory Theater for their help with this production.



\* Denotes membership in Actors' Equity Association, the union of professional stage actors and stage managers in the USA.

\*\* Denotes membership in United Scenic Artists.





**Merchants**  
Bank

# Picture what's next.

Creating thriving communities starts by helping you work toward your goals.

**Let's dream together.**



**We're proud to support the  
Great River Shakespeare Festival!**

**Business | Mortgage | Personal | Wealth Management**

(507) 457-1100 | [merchantsbank.com](http://merchantsbank.com)



# FESTIVAL EVENTS

## ICE CREAM SOCIALS



**Friday & Saturday Evenings**

Join us right after the show every Friday and Saturday night outside the theatre for our Ice Cream Socials! Enjoy a FREE frozen treat, mingle with the cast and crew, and share your experiences of the plays with your fellow audience members.

**ICE CREAM SOCIALS  
ARE SPONSORED BY:**



## POST-SHOW TALK-BACKS

**Thursday Evenings (June 29 - July 27)**

On Thursday evenings, stay in your seats after the show and meet the cast who just performed! Have your questions ready as our actors and crew share what goes on behind the scenes and how we bring our productions all the way from page to stage.

**POST-SHOW TALK-BACKS ARE SPONSORED BY Sally Sloan**

## COMPANY CONVERSATIONS

**Sunday Mornings at 11:00am**

Grab a coffee and settle in for fun, fascinating, and in-depth conversations with our Company members about the plays, the productions, and life in the theater.

Company Conversations take place on **Sunday mornings at 11:00am at Blooming Grounds Coffee House in downtown Winona** - come ready with your questions!

**COMPANY CONVERSATIONS ARE SPONSORED BY:**

**Greg and Terri Evans**



**WISCONSIN  
PUBLIC RADIO**



Select conversations are broadcast on  
**Facebook Live**  
([facebook.com/GreatRiverShakes](https://www.facebook.com/GreatRiverShakes)),  
so you can also join from the comfort  
of your living room!

**GRSF.ORG**

## GRSF EDUCATION PROGRAMS

Great River Shakespeare Festival provides extensive formal training programs for a wide variety of ages. Our focus is not only on theater production but on the development of human character. We are a company of artists, and we are part of a community. **We value respect, empathy, and compassion every bit as much as we value excellence, authenticity, and innovation.** Students focus on intensive study of language interpretation, movement, costume design, lighting design, and scenic design in one-week and three-week day camps. All classes are led by teaching artists who are actively involved in creating work at this year's festival. Younger students perform for their families and friends. The middle and high school-aged students perform for the general public. Please visit our website [grsf.org/classes](http://grsf.org/classes) to learn about the myriad programs we offer for people of all ages.

### JOIN US FOR OUR YOUTH SHOWCASE!

**Sunday, July 23<sup>rd</sup> at 6:00pm - FREE!**

You are invited to attend an evening showcasing the work of our young artists. View design presentations in the lobby starting at 6pm, followed by a **live performance of *Richard III* starting inside the theatre at 7pm.**



**CLEAN  
WATER  
LAND &  
LEGACY  
AMENDMENT**

GRSF classes are supported by a grant from the Elizabeth Callender King Foundation.

GRSF classes are made possible by the voters of Minnesota through a grant from the Southeastern Minnesota Arts Council thanks to a legislative appropriation from the Arts & Cultural Heritage Fund.

## CHILL WITH WILL

**Friday Afternoons  
(Workshops 12:00 Noon & Matinees 1pm)**

Students age 11-18 can enroll in a FREE workshop prior to each Friday afternoon performance. The festival's education team will guide them through theater games and activities related to the show. Participants will then receive free tickets to the afternoon show. Guardians wishing to accompany a student will receive a discounted rate of \$20. Contact the box office to sign up.

**SPONSORED BY:**

**Altra**  
Federal Credit Union



## ACCESSIBLE AND FIDGET-FRIENDLY PERFORMANCES

Friday Afternoons at 1:00pm



All Friday Matinee performances will be interpreted in American Sign Language (ASL) and audio-described live for the blind (via headset). Additionally, these performances will have adjustments to accommodate those who may struggle to sit quietly through an entire performance or who have sensory concerns. Accommodations include priority seating with easy access to the exits, increased audience lighting, and an introduction to sudden sounds and lighting effects during the pre-show remarks. Those who would benefit are encouraged to discuss their needs with the box office so that special seating requests can be accommodated.

**ACCESSIBILITY SERVICES  
ARE SPONSORED BY:**

**Merchants  
Bank**



The company of 2004's *A Midsummer Night's Dream*.  
Directed by Paul Barnes. Photo by Alec Wild.



# THANK YOU TO OUR VOLUNTEERS!

Like many non-profits, Great River Shakespeare Festival's temerity, effectiveness, and longevity is not due to a single factor. The festival benefits from donors, it charges for tickets to create income, it hires proficient, talented artists, trains the next generation of professional theater folk, and it partners with other organizations throughout the community. **No single pillar supports the festival;** collaboration is not only an artistic tenet - it is how we continue to breathe and grow as an organization.

Just as we cannot survive without monetary or artistic support, Great River Shakespeare Festival would fall flat without the support of its corps of volunteers, the Friends of Will. As a new organization in 2004, the festival benefited from a small group of Winonans who immediately identified that such a festival would need volunteer people-power. Thus began the Friends of Will, and the group has continued to grow over the last eighteen years of the festival, and will continue to do so in the future thanks to the passion of its current members.

We at the festival are so incredibly grateful for the thousands and thousands of hours the Friends of Will have donated to the festival for two decades. From airport pickups to artist housing to tech meals, the Friends of Will keep us safe, sheltered and fed. In the costume shop, in the front of house, and in the office, the Friends of Will consistently join in on the theater-making process and become our colleagues, our coworkers, and most of all our friends. The Friends of Will know that to be a community, to have difficult conversations, and to create beautiful, challenging, inspiring, and magical art, we all need some help from our friends.

**Thank you, dear volunteers. Thanks, and ever thanks.**

**If you'd like to join the Friends of Will, visit [grsf.org/volunteer](http://grsf.org/volunteer) today!**

# BECOME A DONOR TODAY!

The mission of the Great River Shakespeare Festival is to enrich people's lives by creating dynamic, clearly understood productions of Shakespeare and other playwrights who celebrate the spoken word.

Can people's lives really be enriched by engaging with clearly-understood 400-year-old texts? The thousands of audience members, students, artists, and administrators who have been part of the 20 year history of Great River Shakespeare Festival can resolutely answer YES! Enriching lives is more than just watching a play, however. Through all of the education and outreach programs and deep exploration into human nature, GRSF has been inspiring conversations in cars, homes, coffee shops, bars, and across political aisles. It is those conversations which enrich our understanding of "others," inspire a resolve to become better members of society, and become change agents in our own lives. As a result, relationships improve, marginalized voices are celebrated, and communities are knit together. This is the work of a non-profit organization and the work you make possible with your charitable support.

We invite you to keep the conversation going by making a tax-deductible gift to GRSF today. Visit [grsf.org/support](http://grsf.org/support) or contact Brittany Clipsham, Director of Development, at [development@grsf.org](mailto:development@grsf.org) or call 507-474-9376. Thank you!



**Arms, Armor and Art**  
**Castlerock Museum**

See authentic arms and armor from Grecians and Romans to the Renaissance "Knights in Shining Armor"

402 South 2nd Street, Alma, WI 54610 [WWW.castlerockmuseum.com](http://WWW.castlerockmuseum.com)

Open 1 to 4 pm Fridays and Saturdays year round  
Sundays - June through August Group days by appointment

**COMMONWEAL THEATRE**

**DEATH trap**  
BY IRA LEVIN

A DEVILISHLY CLEVER THRILLER



ALSO PLAYING  
**WOMEN IN JEOPARDY!**  
BY WENDY MACLEOD

Lanesboro, MN | (800) 657-7025 | [CommonwealTheatre.org](http://CommonwealTheatre.org)



**yarnology**

65 EAST THIRD STREET  
WINONA, MN 55907  
507.474.9444  
[YARNOLOGYMN.COM](http://YARNOLOGYMN.COM)

PROUD SPONSOR OF GRSF

Join us for  
**CALLITHUMP 2023**  
Tuesday, July 25

**WILD. RIDICULOUS. SUPER FUN.**

Festivities start at 5pm, outdoors on the green.  
Dunk your favorite actor in our Dunk Tank!  
Come early, bring a picnic, bring your friends.

**Show starts at 7pm. All seats \$20.23.**

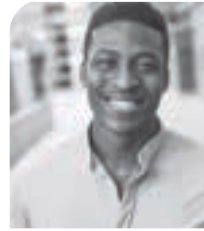
Our company members donate their time and talent to create a brand new variety show every year. Past years have featured show spoofs, songs, stand-up, and more. There's been fashion runways for dogs, cream pies in the face, musical numbers and people eating wings doused in hot sauce. What will this year bring? Who knows. You'll have to be there to find out.

Our annual fundraiser.



ONE  
NIGHT  
ONLY

## 2023 COMPANY BIOS



**Adeyinka Adebola** • Actor • GRSF Seasons: '22

Adeyinka Adebola is ecstatic to return to beautiful Winona! Adey Hails from NYC where He acts year round and performs with the Brooklyn based group "Something Positive". Adey is the founder of "Monologue Roulette!" a creative Network, workshop and showcase series that brings the best of NYC's writers, directors, and actors to collaborate under one roof. Recent credits include "The Beautiful Ghost" (DD Productions), "The Black That I Am" (BRAATA Productions), "A Cops and Robbers Story" (Vernon Films), "Ruined" (The Heights Players), "Macbeth" (Lehman Stages).



**Lonnie Rafael Alcaraz** • Co-associate Artistic Director • GRSF Seasons: '08, '09, '10, '11, '12, '13, '14, '15, '16, '17, '18, '19, '21, '22

Lonnie is a professor at the University of California, Irvine, where he is the head of the lighting program. He has designed for various regional theatres around the country. Recent designs include Opera Festival on Ice for Bietak Production (Muscat, Oman), Curie Curie for Transversal Theatre Company in Warsaw, Poland, A Christmas Carol at the Denver Center, American Mariachi and A Shot Rang Out at South Coast Repertory, All is Calm at the Alabama Shakespeare Festival; Mojada at Oregon Shakespeare Festival and Portland Center Stage. He is also an associate artist and resident designer at South Coast Repertory. He is a member of the United Scenic Artists, Local 829/International Alliance of Theatrical Stage Employees. His complete design portfolio can be found at: [www.lradesigns.com](http://www.lradesigns.com).



**Sarah Bahr** • Costume Designer *The Winter's Tale* • GRSF Debut

Sarah Bahr she/her/hers Sarah is a Twin Cities based freelance Costume and Scenic Designer for theater, opera, and dance. Her work has been featured with companies including the Jungle Theater, Ten Thousand Things Theater, Trademark Theater, Guthrie Theater, Theater Mu, Theater Latte Da, Penumbra Theater, History Theater, Minnesota Opera, and Vail Dance Festival. In addition to freelance design work, Sarah teaches design courses at various universities and advocates for meaningful opportunities for emerging theater artists. She is also an advocate for equity, diversity, and inclusion among designers and technicians in the performing arts industry. She holds a Design and Technical Theatre MFA from the University of Minnesota, a Studio Art MA from New York University, and a Design and Technical Theatre BFA from University of Minnesota Duluth. Sarah is a United Scenic Artist Local 829 Union Member. [sarahbahr.com](http://sarahbahr.com) @sarahbahrdesign



**James Balistreri** • Lighting Designer *Imbroglia* • GRSF Debut

Jimmy is excited to be working on his first show at GRSF! His recent work as a lighting designer or assistant includes the Utah Shakespeare Festival, Golden State Ballet Company, REDCAT Theatre, Northern Sky Theater and more. He is currently studying to receive his MFA in Lighting Design at UC-Irvine. Enjoy the show! Full portfolio at [jablights.com](http://jablights.com). Go Pack Go!



**Alegra Batara** • Actor • GRSF Seasons: '19

Alegra (they/she) is honored to be back at GRSF for the summer! They were last in Winona as a member of the Apprentice company in 2019. Since then, they have received their BFA from the Conservatory of Theater Arts at Webster University and begun performing around the country. Recent credits include: Marianne Dashwood in Sense and Sensibility (Village Theatre), Mercutio in Romeo and Juliet, and Miss Honey in Matilda (Festival 56). Alegra has also begun their career as a director and writer, most recently

507.474.7900

BOXOFFICE@GRSF.ORG  
GRSF.ORG

DOWNTOWN OFFICE:

163 E 2nd St. - Winona MN 55987

PERFORMANCE VENUE:

DuFresne Performing Arts Center  
(on WSU Campus)  
450 Johnson St. - Winona MN 55987

@GreatRiverShakes

@GRShakes

@GRShakes

@GreatRiverShakesFest

#GRSF2023

#grshakes



## 2023 COMPANY BIOS

conceiving and leading a devised theater piece called "shuffle" that featured experimental movement and explored the link between music and memory. In their free time, they bake, crochet, and collect trinkets. Eternal thanks to Doug, Tarah, and Melissa for welcoming them back to the company and being fantastic mentors. Love to family and friends for their continued support of their dream chasing. [Alegrabatar.com](http://Alegrabatar.com)



**Kristen Benner** • Assistant Stage Manager *The Winter's Tale* • GRSF Debut  
Kristen Benner is from Buffalo NY, and is currently entering her fourth year at SUNY Purchase where she is studying for her BFA in Theatre Design/Technology with a concentration in Stage Management. Past credits include *As You Like It* at Shakespeare in Delaware Park; *The Opening Ceremony of the World University Games* at Lake Placid; *The Nutcracker* at Greenwich Ballet Academy. At Purchase College, she has stage managed *The Senior Acting Showcase*, *Serious Money*, and *Henry IV Pt.2* among others. She would like to thank her family and friends for aiding her in where she is today.



**Benjamin Boucvault** • Actor/Fight Choreographer • GRSF Seasons: '13,'14,'15,'16,'17,'18,'19,'20,'21,'22

This will be Benjamin's 11th season with Great River Shakespeare Festival; notable performances include *Cymbeline/Iachimo*, *Julius Caesar/Cassius*, *Midsummer/Oberon*, and *Romeo and Juliet/Romeo*, other theaters include the Asolo Repertory Theatre, Curtain Theatre, St. Petersburg Shakespeare Company, and the Orlando Shakespeare Theatre where he performed *Vanya*, *Sonya*, *Masha*, and *Spike/Spike*. Benjamin is also a writer and published his first novel, "The River Road" in 2014; the audiobook of the novel was also produced that same year, which he narrated. As an active martial artist, he is often choreographing fights for both film and theatre. Benjamin teaches acting and stage combat at the American Academy of Dramatic Arts, Los Angeles & New York. MFA, SAG-AFTRA/AEA @boucvault



**Ashley Bowen** • Actor • GRSF Seasons: '21,'22

Ash Bowen (she/they) is an actor from Dallas, Texas and is an MFA Acting student (class of 2024) at the University of Missouri- Kansas City. She has a BA in Government and a BA in Theatre & Dance from the University of Texas at Austin. She was an acting company member last summer here at GRSF where she played Ann Johnson in *The African Company Presents Richard III* and understudied the role of Viola in *Twelfth Night*. She was an apprentice at GRSF in 2021 where she understudied the role of Miranda in *The Tempest* and she played Lord Capulet, Benvolio, Chorus, and Gregory in the apprentice *Romeo & Juliet* production. At the UMKC Conservatory, she has recently been seen in *Not I*, *Fixing King John*, *The 39 Steps*, *Thinner than Water*, *Jane Eyre*, *Cymbeline*, and understudying for *Jump*. Thank you to my loved ones at home! For more information: [Ashbowen.com](http://Ashbowen.com), @teao3



**Emma Bucknam** • Box Office Manager • GRSF Seasons: '14,'17,'19,'21,'22

Emma Bucknam (she/her) is an actor, director, and student at Nebraska Wesleyan University, where she is pursuing her Acting BFA with a minor in Gender Studies. Some highlighted acting credits from her time there include *Twelfth Night* (Olivia), *Measure for Measure* (Mariana), and *Bondagers* (Tottie). A Winona native, she also kickstarted the Winona Youth Shakespeare League, a group of primarily high school students with a passion for Shakespeare, and has directed projects with that group including *Romeo and Juliet*, *A Midsummer Night's Dream*, and *Much Ado About Nothing*. Over the years, she has been involved with GRSF in multiple capacities,

## 2023 COMPANY BIOS

including as a young actor (*The Merry Wives of Windsor*; *Richard III*, *Macbeth*), SYA student, box office associate, house manager, SYA teaching assistant, attendee since age 8, and now is very excited to be celebrating 9 years with the festival this 20th Anniversary Season, as the box office manager!



**Alexander Carey** • Stage Manager *The Winter's Tale* • GRSF Seasons: '19,'22

Alexander Carey is from Roscoe, IL. They are currently enrolled in their last year at the University of Nevada, Las Vegas pursuing a Masters in Fine Arts in Theatre Stage Management. Some of their recent credits include *On-Call Stage Manager* with JABBAWOCKEEZ TIMELESS (JBWKZ Productions, LLC), *Production Stage Manager* for *She Kills Monsters* (Nevada Conservatory Theatre), & *Stage Manager* for *Twelfth Night* (Great River Shakespeare Festival). Alexander received a Bachelor in Fine Arts in Theatre with an emphasis in Stage Management from The University of Wisconsin-Whitewater.



**Andrew Carlson** • Lead Teacher Shakespeare For Young Designers • GRSF Seasons: '06,'07,'08,'09,'10,'11,'12,'14,'15,'17,'18,'19,'20,'21,'22

Andrew has worked as an educator, dramaturg, director and actor at GRSF since 2006, playing roles such as *Hamlet*, *Macbeth*, and *Hotspur*. He is a co-author of the 11th edition of *The Essential Theatre* textbook and has published essays in *Theatre History Studies*, *American Theatre Magazine*, and the *Routledge Companion to Dramaturgy*. An award-winning educator, Carlson received the 2016 Regents' Outstanding Teaching Award at the University of Texas. One of his proudest achievements is co-creating the Shakespeare for Young Actors program at GRSF in 2008.



**Nicholas Carlstrom** • Assistant Stage Manager *Imbroglia* • GRSF Debut

Nicholas Carlstrom is excited to return to the beautiful driftless region and make their Great River Shakespeare Festival debut! Originally from Blaine, Minnesota, Nicholas has spent the last year traveling and working around the upper Midwest at Peninsula Players Theatre (*The Rainmaker*, *Ripcord*, *Murder for Two*) in Fish Creek, WI, and most recently working at First Folio Theatre (*Little Women*, adapted by Heather Chrisler) in Oak Brook, IL, during their final season. Outside of stage management, Nicholas serves on the advisory board for the Emerging Professionals Ensemble in Eden Prairie, MN. They hold a BFA in Theater, Emphasis in Stage Management and Minor in Arts Administration, from Viterbo University in La Crosse, WI.



**Brittany Clipsham** • Director of Development • GRSF Debut

Brittany has lived in Winona for about 7 years and in Minnesota for most of her life. She went to undergrad at Concordia College, U of M Twin Cities, and Winona State University, where she completed her bachelor's. She is currently working towards a Master's in Public and Nonprofit Administration from Metropolitan State University. Brittany has been doing theater since 5th grade but transitioned from singer/actor to the production/business side of theater a few years after she had a son, Zeke. She just got married this past summer to her lovely partner, Patrick. She has a dog, Jackson, and two cats, Gus and Tad. She also teaches an improv class for kids at MCA and teaches art projects during MMAM's Seasonal Saturdays. In her free time, she mostly hangs out with family, but she also likes to cook, bake, and read or just collect books that she hopes to read.



## 2023 COMPANY BIOS



**Katie Cunningham** • Voice/Text Coach • GRSF Debut

Katie Cunningham is an Assistant Professor of Theatre and Head of Acting at the University of Tennessee, Knoxville. As an actor, she has appeared on a host of stages in New York and across the country, including multiple seasons at Utah Shakespeare Festival (Lady Macbeth, Emilia in Othello, and Maria in Twelfth Night among others); Asolo Rep (Annette in God of Carnage, Marjorie in Both Your Houses directed by Frank Galati); and Clarence Brown Theatre (10 seasons in the resident acting company). Recent and upcoming voice, text, and dialect coaching includes PlayMakers Rep; Nashville Rep; Southwest Shakespeare Company; and multiple productions at Clarence Brown Theatre as the resident voice, text, and dialect coach. Katie is a Certified Teacher of Knight-Thompson Speechwork and a PAVA Recognized Vocologist. MFA Acting, FSU/Asolo Conservatory for Actor Training; BA, UNC Chapel Hill. She is a proud member of Actors' Equity Association since 2010, SAG-AFTRA, VASTA, and PAVA.



**Emily Fury Daly** • Actor • GRSF Seasons: '05,'07,'08,'09,'10,'13

Emily is so happy to be back in her home-away-from-home, Winona! She spent most of her summers here as a kid, participating in Shakespeare For Young Actors and appearing in GRSF mainstage productions as countless ladies-in-waiting. For the past decade, Emily has worked professionally at theatres across the country: GRSF '13, American Players Theatre, Pittsburgh Public, Chautauqua Theater Co, Pacific Conservatory Theatre, Theatre SilCo, La Mama, and Soho Playhouse. She also is a stand-up comedienne in NYC, performing in comedy clubs across the city. Next up, Emily will be taking her one-woman-show, "Furious", to the Edinburgh Fringe Festival in August.



**Marisa Dean** • Marketing Apprentice • GRSF Debut

Marisa Dean (she/they) is an actor, arts administrator, and student at Ball State University where she is pursuing a BFA in Acting with a minor in New Works for the Stage. Her favorite recent acting credits at Ball State include Sweat (Tracey), FURY (Clytemnestra), and The Dumbwaiter (Ben). They are the founder of Ball State's first Play Book Club and are about to enter their fourth year serving on the Artists For Inclusivity Executive Board as Social Media Coordinator; and now Vice President. She currently serves as Academic Peer Mentor of the Performing Arts Living-Learning Community at Ball State. She is very grateful for the opportunity to step into the well-loved and respected community that is GRSF this summer. Instagram: @marisandean



## 2023 COMPANY BIOS



**Ella Egan** • Assistant Production Manager • GRSF Seasons: '22

Ella Egan is a freelance stage manager and carpenter based in Saint Paul, MN. They are happy to be returning for their second season at GRSF! Their recent projects include the 2022-23 season at Minnesota Opera, Weathering at Penumbra Theater, Twelfth Night at GRSF, and Church Basement Ladies with Troupe America.



**Pedro Oliveira Figueiredo** • Video Apprentice • GRSF Debut

Pedro Figueiredo was born in São Paulo, Brazil, and grew up in Salvador, Brazil. He is entering his sophomore year studying Film Studies and Theatre at Ohio Wesleyan University. Pedro was one of the founders of the Incredible Film Club, the first film club at OWU, and serves as President of the organization. At OWU, Pedro has previously been involved in Fill Fill Fill Fill Fill Fill Fill (Assistant Stage Manager), One-Acts 2022: Dynamic Duos (Stage Manager), and Xanadu (Swing).



**Michael Fitzpatrick** • Actor • GRSF Seasons: '05,'06,'08,'09,'10,'11,'12,'13,'14,'15,'16,'17,'18,'19,'20,'21

Michael Fitzpatrick is an actor and designer whose career spans regional theater, off-Broadway, national Broadway tours, concerts, cabaret, film, and television. Selected theater credits include: First National Broadway tour of 42nd St., roles at Utah Shakespeare festival, St. Louis repertory, Kansas City repertory, the Denver Center theater, Ensemble Shakespeare company NYC, Musicals Tonight NYC, A.C.T. In San Francisco, and a company member at the Great River Shakespeare Festival.



**Tarah Flanagan** • Director *As You Like It*, Actor, Dialect Coach • GRSF Seasons: '07,'08,'09,'10,'11,'12,'13,'14,'15,'16,'17,'19,'20,'21,'22

Tarah Flanagan - Time! Autolykus: is delighted to be returning to beautiful Winona MN for her 15th season. Favorite GRSF credits include the Poet (an Iliad), Viola (Twelfth Night), Miss Havisham (Great Expectations), and Puck (Midsummer Night's Dream). Recent credits include RAMY (Hulu), ROOTED (Cincinnati Playhouse), and Twelfth Night (Shakespeare Theatre of NJ). Tarah is proud to serve as GRSF's Program Director for Shakespeare For Young Actors.



Michael Fitzpatrick, Rob Eigenbrod, and Marcus Truschinski in 2006's *Twelfth Night*. Directed and photographed by Alec Wild.

## 2023 COMPANY BIOS



**Elizabeth Fritton** • Lighting Apprentice • GRSF Debut  
Elizabeth (Beth) Fritton is a lighting apprentice for GRSF. She will be graduating from St. Mary's University of Minnesota this December, where she has been studying as a Theatre major on the Design/Technology track. Her previous work includes Lighting Design for *The Drowning Girls* and *The Stonewater Rapture* (Saint Mary's University of MN); Lighting Design for *The Animal Kingdom* (St. Mary's University of Twickenham, London); and Technical Assistant for *Crackers* (Polka Theatre).



**Christopher Gerson** • Actor • GRSF Seasons: '04, '05, '06, '07, '08, '09, '10, '11, '12, '13, '14, '15, '16, '17, '18, '19, '21, '22  
Christopher Gerson is an actor and filmmaker living in New York City. Recent theatre credits include *Chains* at the Mint Theatre (off Broadway) *Macbeth*, *Alabama Story*, and *BUZZ* (dir. Carrie Preston) at the Alabama Shakespeare Theatre, and *Richard III* at GRSF. The Pearl Theatre, New Georges, Red Bull Theater, South Coast Repertory Theatre, Repertory Theatre of St. Louis, Cleveland Play House, Actors' Theatre of Louisville, Chicago Shakespeare Theatre, A Noise Within, The Folio Theatre, The Actors Gang, and Pioneer Theatre. Recent Television/Film: *The Other Two* (HBO), *The Blacklist*, *FBI: Most Wanted*, *New Amsterdam*, *Mr. Robot*, *The Good Fight*, *Younger*, *Days of our Lives*, *Chicago Hope*, *Fort Greene* and *Darwin: The Series*.



**Karl Gfall** • Properties Artisan • GRSF Seasons: '11, '12, '14, '15, '16, '17, '18, '19, '21, '22  
Karl is delighted to be returning to Winona once again in the long-held capacity of Props Artisan, and latterly as part time Production Manager. Winona has become a cherished summer home. In the remainder of the year Karl is a Stagehand with the Paramount Theatre of Aurora, IL, as well as an occasional playwright, voice actor, and otherwise flexible itinerant professional.



**Viva Graff** • Company Manager • GRSF Seasons: '21  
Viva Graff is a recent graduate from Concordia College in Moorhead, MN with a degree in music. She is from Winona and has been involved in GRSF in the past in the box office. As a musician, she has played with the Fargo-Moorhead Symphony Orchestra as a substitute bassoonist, conducted Concordia's Symphonia Orchestra, and worked with the Fargo-Moorhead Opera Company. She is excited to be returning to the Winona community and to GRSF!



**Abbi Hess** • Stage Manager *Imbroglia* • GRSF Seasons: '21, '22  
Grateful to be back for the third year with the GRSF company and as a SM! Abbi spends the other part of the year in Madison, WI as Forward Theater's ASM. She is super thankful for family, friends, and teams/companies that allow her to live this great magical, theatrical life.

## 2023 COMPANY BIOS



**Kristine Hippi** • Finance Associate • GRSF Seasons: '21, '22  
Kris Hippi (she/hers) has worked in theater and film in both the administrative and artistic realms for 30 years, as a performer/Creative Director for Chicago's Second City, CFO for the Bug Theatre, Denver CO, and Artistic Director of Paper Cat Films. She is an artist, photographer and award winning filmmaker.



**Heather Hirvela** • Lead Draper • GRSF Seasons: '13, '14, '15, '16, '17, '19, '21, '22  
Bio goes here





## 2023 COMPANY BIOS



### Jenna Jamison • Costume Design Assistant • GRSF Debut

Jenna Nicole Jamison is very excited to be a part of Great River Shakespeare Festival as Assistant Costume Designer for *The Winter's Tale*. This will be her first time here at the festival. Jenna is a recent graduate of Kent State University where she obtained a B.F.A in Theatre Design, Technology, and Production with a focus in Scenic and Costume Design, as well as a minor in Creative Writing. Her previous work includes *Somewhere: A Primer to the End of Days* at Kent State University (scenic designer), *Urinetown* at Kent State University (co-costume designer), *White Christmas* at Rubber City Theatre in Akron, OH (co-scenic designer), and *The Lightning Thief* at Rubber City Theatre (costume designer).



**Stephanie Jones • Costume Shop Manager • GRSF Seasons: '17,'18,'19,'21,'22**  
 Costume Designer: *Costume Shop Manager*; Great River Shakespeare Festival 2017 to Present. Resident Designer/ *Costume Shop Manager*; University of Utah School of Dance. Utah Ballet Gala Various pieces 2017/2019. Various designs at Gamut Theatre Group, Iolani, University of Hawaii at Manoa, Ballet Yuma, Clytie Adams Ballet Company, The Grand Theatre. Artistic Director for Pacific Okinawa Players, 2004-2009 a military community theatre for service members who are stationed in Okinawa, Japan.



**Willa Krase • Box Office Associate • GRSF Seasons: '21,'22**  
 Willa (she/her) began acting as part of the Winona Youth Shakespeare League in 2019, and continued doing so with the Shakespeare for Young Actors program. She began working as a Box Office Associate for GRSF in 2021, and is excited for another wonderful year of Shakespeare in Winona. Willa is currently pursuing a Geography BA and Spanish minor at the University of Minnesota.



**Chloe Kummer • Wardrobe Apprentice • GRSF Debut.** This is Chloe Kummer's first season at GRSF. She is a junior at the University of Southern Indiana and has done several productions there as an actor and as a member of the wardrobe crew.



**Maya Lavin • Education Apprentice • GRSF Debut**  
 Maya Lavin is a Junior at the University of Texas at El Paso pursuing a BFA in Stage and Theatre Management. She has worked on a variety of shows. She most recently stage managed two High School Theatre Competitions and assisted an elementary school in their competition as well. She

**Hoff** CELEBRATION of LIFE CENTER  
*Your loved one never leaves our care*  
 507.452.4241 [HOFFFUNERAL.COM](http://HOFFFUNERAL.COM)

## 2023 COMPANY BIOS



hopes to go to grad school for Theatre Education as she is passionate about working with children through art. This will be her first time working at GRSF, but she is excited to work with everyone and hopes everyone has an amazing summer!

### Jovita Light • Front of House Associate • GRSF Debut

Jovita recently moved to Winona from San Diego, CA where she worked in human resources and education. She spent the last seven years working with 4th - 8th grade students at an arts academy. She currently works in University Advancement at VWSU.



### Gamma Lister • Properties Artisan • GRSF Debut

Gamma is a multi-media artist and theater-maker. Born in Chicago-land, they come to GRSF this year from North Carolina, where they are studying for an MFA in Scenic Art. They are over-the-moon about joining GRSF for its 20th anniversary and already feel at home.



### Brock Looser • Actor • GRSF Seasons: '22

Brock (she/her) is honored to be back at GRSF, after understudying Maria/Fabia/Valentine in last year's *Twelfth Night*, before she heads to London to pursue her MFA in Acting at LAMDA. Theatrical credits include *Pericles* (San Francisco Shakespeare Festival), *Full Circle* (Chain Theatre, NYC), *The Secret Garden* (Classic Theatre of Maryland). Film credits include two features in post production with two in development, as well as short films recognized by festivals including *HollyShorts*, *TIWFF*, and *NFFTY*. Brock is proud to serve as an Assoc. Producer at the female-focused media company Brave-Mouse. She holds her BFA in Drama from NYU Tisch with Honors due to her thesis "Shakespeare's Social Others." Love and gratitude to the fam! [brocklooser.com](http://brocklooser.com) / [@brocklooser](https://twitter.com/brocklooser)



**Sydney Martin • Costume Crafts • GRSF Debut**  
 Sydney Martin is a craft artisan originally from Kansas City, MO. She recently graduated with her MFA in Costume design from Florida State University. She has worked on shows such as *Something Rotten!*, *Dragons Love Tacos* and *Men on Boats*.

SANDBAR  
**STORYTELLING**  
*Festival*  
 OCT 12-14, 2023 | WINONA, MN  
[SandbarStorytellingFestival.org](http://SandbarStorytellingFestival.org)  
 f i t



## 2023 COMPANY BIOS



**Sparrow Matthews** • Stitcher • GRSF Seasons: '17  
Sparrow is returning to GRSF for the first time since their intern summer in the costume shop in 2017. Currently completing their MFA in Scenic Design at Wayne State University, they were the apprentice resident in the costume shop at Milwaukee Rep in 2021-22, the draper at Hope Summer Repertory Theater in 2019, and graduated with a BFA in costume design from Wayne State University in 2020. They are excited to return to Winona and Great River.



**Melissa Maxwell** • Co-Associate Artistic Director; Director/Writer *Imbroglia* • GRSF Seasons: '17, '18, '19, '20, '21, '23  
Past GRSF productions: *The Tempest*, *No Child*, *Cymbeline*, *Shakespeare in Love*, *All's Well that Ends Well*, *Richard III*, *Comedy of Errors*. Other Playwriting Credits: *SALT IN A WOUND* (Julie Harris Playwright Competition, received 5 Black Theater Alliance Award nominations and a "Production of the Year" nomination from The African American Arts Alliance of Chicago. *UNREQUITED LOVE* (received an Audelco Award nomination and a New Professional Theatre's Our Words Award). *FETUS ENVY* (manhattantheatre source's Book of EstroGenius anthology, 2007). Directing Credits include: Utah Shakespeare Festival, George Street Playhouse, The Repertory Theatre of St Louis, The Kitchen Theatre/Civic Ensemble, Pearl Theatre Company, Soho Playhouse. TEDx Talks: TEDxMosesBrownSchool: Taking Ownership and TEDxBarnardCollegeWomen: On Courage. [www.melissamaxwell.com](http://www.melissamaxwell.com).



**Bridget McCarthy** • Mental Health Coordinator • GRSF Seasons: '22  
Bridget McCarthy (she/they) is an artist, advocate, and a mental health coordinator for theatre, TV and Film. She is a Trauma and Resilience Trainer (CTRT), a Certified Trauma Support Specialist (CTSS) with Trauma Institute International, a Certified Mental Health First Aid instructor with the National Council for Behavioural Health, and is currently training with the North American Drama Therapy Association as a Drama Therapist candidate, as well as pursuing a Master's in Clinical Mental Health Counseling at New England College. Her solo work has centered around programming that amplifies under-heard voices, including time spent as a staff member and facilitator with Shakespeare Behind Bars. As an actor, Bridget is a resident ensemble member of Stage Door Theatre, and is seen frequently on stages around her beloved chosen home of Atlanta, GA. They have also been on the stages of Atlanta Shakespeare, Synchronicity Theatre, Burning Bones Physical Theatre, Alliance Theatre, Essential Theatre, and Georgia Ensemble Theatre. Nationally, Bridget has appeared with Cincinnati Shakespeare, Elm Shakespeare, Pigeon Creek Shakespeare, and many others. Their original solo show, "Fat Juliet" has toured nationally and features Bridget's love of stand up comedy, Shakespeare, AC/DC, and the Lion King.



**Duncan McIntyre** • Actor • GRSF Seasons: '16, '17  
Duncan is thrilled to return to Winona for the Great River Shakespeare Festival's 20th anniversary season. A Chicago-based actor, Duncan has worked regionally at Kansas City Rep, Unicorn Theatre, and Kansas City Actor's Theatre. Some of his favorite credits include *Dev* (Stupid F\*&^ing Bird), *Casey/Georgia* (The Legend of Georgia McBride), *Cornwall* (King Lear), *Hastings* (Richard III-at GRSF), and *Sir Willful Witwoud* (Way of the World). Duncan would like to thank the entire company for such incredible work, his ever-supportive family and friends, and the town of Winona (his personal "Forest of Arden") for their wonderful inspiration and support.

## 2023 COMPANY BIOS



**John Merritt** • Costume Designer *As You Like It, Imbroglia* • GRSF Seasons: '17, '18, '19, '21  
John is a Freelance Costume Designer for Theatre and a Costume Buyer/Shopper for Film & TV Production residing in Atlanta, GA. Previous GRSF Design credits include *Every Brilliant Thing* ('21) and *All the Town's a Stage: A Winona Story* ('22). John received his Master's of Fine Arts in Costume Design at The University of Tennessee, Knoxville ('21) and his Bachelor's of Arts at University of Southern Indiana ('18). Notable design credits include *Detroit 67*, *People Where They Are*, *Airness* (Clarence Brown Theatre) *Anonymously*, *Crumbs from The Table of Joy*, *The Glass Menagerie*, *Fool for Love*, *Venus in Fur* (University of Southern Indiana).



**Joseph Millett** • Production Manager • GRSF Seasons: '14, '15, '16, '17, '18, '19  
Joseph Millett is entering his 6th and a quarter season with GRSF, all as Production Manager. He is an assistant professor of stage management at the University of Arkansas, and he could have sworn he was done with freelancing until he got a phone call from Doug Scholz-Carlson one Saturday morning in May...



**Kacie Mixon** • Teaching Artist - *Will's Power Players, Will's Creative Drama* • GRSF Seasons: '17, '18, '19, '21, '22  
Kacie Mixon has taught dramatics for young people for over 20 years. She holds a BFA in Theater from Rutgers University, and a MAT in Teaching from Montclair State University. She served as Education Coordinator at the Alabama Shakespeare Festival and has taught, adjudicated, directed and mentored young actors at ASF, George Street Playhouse, Utah Shakespeare Festival, Shakespeare Theater of NJ, Omega Institute, Princeton Montessori School, Newark Public Schools, and with her husband, GRSF actor Chris Mixon, co-founded a Creative Dramatics for Homeschoolers program in rural Alabama. Kacie teaches Literacy, Theater, Civics, Public Speaking and Reading in New Jersey.



Andrew Carlson and Brian White in 2014's *Hamlet*. Directed by James Edmondsons. Photo by Dan Norman.



**Landen Norton** • Sound Apprentice • GRSF Debut  
Landen Norton is a current sound student at Ball State University. He has been in productions as a performer, musician, and crew. He recently just closed his first collegiate show as Sound Designer of *A Taste of Broadway*. He hopes to have a great summer here at GRSF!



**Scott O'Brien** • Sound Designer *Imbroglia* • GRSF Seasons: '19,'21  
Scott O'Brien (Sound Designer) has composed and designed theatre and dance for a variety of off-Broadway and regional theaters. He was the Resident Composer/Sound Designer for American Globe Theatre (2000-2014), the Chautauqua Theater Company (2006-2009), Adirondack Theatre Festival (2013-2015). He has lectured on Sound Design at SUNY-Rockland, Pace University, Fairleigh-Dickinson University, The Duke Ellington School for the Arts and Montclair State University (heading up the Sound Design Program there from 2015-2019). His production company Duck & Trout Music is based out of Gardiner, ME. Currently, he is composing for The Public Theatre (Lewiston, ME) and Theatre at Monmouth (Monmouth, ME) and has the good fortune to collaborate frequently with director, actor and playwright Melissa Maxwell.



**Lauren Peters** • Assistant Stage Manager *As You Like It* • GRSF Debut  
Lauren Peters (she/her) is a freelance Chicago stage manager and production manager. Chicago credits include productions at Steppenwolf Theatre Company, Pegasus Theatre Company, Rough House Theatre, Windy City Playhouse, Theatre Wit, The Story Theatre, and more. She graduated from Loyola University Chicago with a BA in Theatre. She'd like to thank friends, family, Zach, and her two kitties for all their love, support, and light.



Kate Mazzola, Tarah Flanagan, Shandra Gabrielle, and Nicole Roddenburg in 2009's *Love's Labour's Lost*. Directed by Paul Barnes. Photo by Alec Wild.



**China Pharr** • Actor • GRSF Seasons: Debut  
China is a recent graduate of The Stella Adler Studio of Acting, Day Conservatory. She's happy to be doing Shakespeare in wide open spaces, with the crickets.



**Jeffrey Polunas** • Sound Designer *The Winter's Tale*, Sound Supervisor • GRSF Debut  
Jeff Polunas (He/They) is thrilled to be joining this season. Polunas is the Assistant Professor of Sound and Projections at Kent State University. Polunas received his MFA in sound design from UC-Irvine. He has designed more than 150 productions during his career including Million Dollar Quartet, She Loves Me, Shakespeare in Love, The Sisters Rosensweig, Venus in Fur, Nate the Great, Naked Mole Rat Gets Dressed, Ella Enchanted, Flora & Ulysses, Ivy+Bean: The Musical and Between Us Chickens (South Coast Repertory); A Doll's House Part 2, Silent Sky, Fences, Abigail/1702, A Walk in the Woods and Uncanny Valley (International City Theatre); Passion Play, Seminar and A Bright New Boise (Chance Theater); The Full Monty, Peter Pan, The Wedding Singer and The Producers (Summer Repertory Theatre); and Company, Much Ado About Nothing and The Importance of Being Earnest (PCPA Theaterfest). He received Scenie Awards (StageSceneLA) for Sound Design in 2015 and 2017 and has been nominated for NAACP, Stage Raw and Kennedy Center American College Theater Festival awards.



**De'Onna Prince** • Actor • GRSF Seasons: '15,'16,'19  
De'Onna Prince is a classically trained actress from Oklahoma City. She earned her Bachelors of Fine Arts in acting from The University of Oklahoma Peggy Dow Helmerich School of Drama. In her third year, she traveled overseas to the National Arts Festival in Grahamstown, South Africa, where she won the Silver Ovation Award for playing the lead role in Miss Evers' Boys. De'Onna her gained professional experience at the Great River Shakespeare Festival in productions of King John, As You Like It, Julius Caesar, Cymbeline, and Macbeth. De'Onna made her break in the film industry as the principal role of Allison Strawberry in Gosnell: The Trial of America's Biggest Serial Killer.



**Avery Reagan** • Lighting Designer *As You Like It*, *The Winter's Tale* • GRSF Seasons: '16,'19  
Avery Reagan is a lighting designer currently based in the Los Angeles area. Originally from Atlanta, Georgia (a proud and enthusiastic Braves fan), Avery discovered her passion for lighting through school and community theatre productions. As she specified and matured her craft, she found how mesmerizing and impactful light can be within a production. She is very excited to return to GRSF for her third summer with the company. 2016 was Avery's first year as a lighting intern; 2019 she returned as a lighting designer and assistant lighting designer to Lonnie Alcaraz; and now she returns as a lighting designer for the 2023 season. Avery has designed and assisted from coast-to-coast with companies such as South Coast Repertory Theater, New York City Ballet, San Francisco Opera, L.A. Dance Project and the Alvin Ailey American Dance Theatre. She received her M.F.A. from the University of California, Irvine and was the 2020-2022 Gilbert Hemsley Lighting Intern.



## 2023 COMPANY BIOS



### **Skylar Revell** • Properties Artisan • GRSF Debut

Skylar Revell is a scenic artist originally from Oconomowoc, WI and a BFA graduate from Northern Illinois University. Her NIU works include painting and carpentry for the 2019 Fall Dance Concert, A Bright New Boise, and The Conference of the Birds. After moving to Illinois her work includes painting and carpentry for the '22 season at Timber Lake Playhouse, including Escape to Margaritaville, Lend Me A Tenor, and We Will Rock You. Most recently she has been doing carpentry for the Paramount Theater's Broadway series The Sound of Music, Into The Woods, and School Of Rock. She is excited to continue growing her skills at the Great River Shakespeare Festival, and hopes you enjoy the show!



### **Ava Ringlien** • Box Office Associate • GRSF Seasons: '21, '22

Winona native. Upcoming junior at UMD, Biology major, theatre minor! Box Office Associate in seasons 17 and 18. Former student in GRSF's Shakespeare for Young Designers for 4 years (seasons 14, 15, 16, 17).



### **Eliana Rowe** • Actor • GRSF Debut

Eliana Rowe is a Theatre Artist/Storyteller based in Albany, NY. Regional: Twelfth Night (Viola) at the Shakespeare Theatre of New Jersey, Take Me With You (Mayenne, Evie, Celia) at Capital Repertory Theatre. Educational: Harriet Tells It Like It Is (Harriet) with Capital Repertory Theatre, Shakespeare LIVE! 2022 with The Shakespeare Theatre of New Jersey. Other recent credits include: Twelfth Night with The Rooted Voyageurs, The Tempest: Just(ice) like Waters with Black Shakespeare Project, and A Deed Without a Name, Beckett's Echo Chambers, and City of Myth: Ilium Sings all with Troy Foundry Theatre. Rowe is a proud alumni of Fordham University. @ simply\_eliana\_



### **Dayne Sabatos** • First Hand, Front of House Associate • GRSF Seasons: '22

Dayne (They/He) is an itinerant artist and creative, working and traveling the country. They have a deep passion for preserving the traditions of bespoke clothing creation, while constantly finding new and innovative approaches to garment creation. They love learning and aren't afraid of a challenge.



### **Amanda Salazar** • Director of Inclusion and Belonging, Mental Health Coordinator • GRSF Debut

Amanda has worked as a consultant and educator in the Diversity, Equity and Inclusion space for the past decade, specializing in using drama to facilitate behavior change. Additionally, she is currently studying and training in Intimacy Direction and Coordination. Amanda is also a professional actress working off-Broadway and regionally with credits including Austin Shakespeare, Marin Shakespeare, Zachary Scott Theatre, New Ohio Theatre, and Theatre for a New Audience. For more information on the work she is doing, please visit [www.theamandasalazar.com](http://www.theamandasalazar.com). Member of Actors' Equity Association.

## 2023 COMPANY BIOS



### **Carl Schack** • Carpenter, House Manager • GRSF Seasons: '22

Carl is from Lincoln Nebraska where he is currently pursuing a BFA in acting at Nebraska Wesleyan University. He has worked in many facets of theatre, including fight choreography, design positions, and as an actor.



### **Maya Schaefer-Fiello** • Stitcher • GRSF Debut

Maya is a recent biology graduate from Macalester College. She worked as a stitcher in her college's costume shop for three years, working with other students to assemble costumes for shows such as The Rocky Horror Picture Show, Angels in America, Thunderbodies, and Fête de la Nuit. GRSF is Maya's first non-academic theater experience, so she is thankful for all the guidance and support she has received so far from her mentors, peers, and friends.



### **Doug Scholz-Carlson** • Artistic Director, Director *The Winter's Tale* • GRSF Seasons: '04, '05, '06, '07, '08, '09, '10, '11, '12, '13, '14, '15, '16, '17, '18, '19, '20, '21, '22

Doug works nationally as a director, fight choreographer, actor and certified intimacy director. In 20 seasons at GRSF, Doug played roles including Henry in Henry V, Feste in Twelfth Night, Thomas in Venus in Fur, Guildenstern in Rosencrantz and Guildenstern are Dead, and Stephen Price in African Company Presents Richard III, and directed productions including Macbeth, Richard III, Cymbeline, Shakespeare in Love, and As You Like It. Doug was the first intimacy director at the Metropolitan Opera working on 9 productions including Fire Shut Up in my Bones and Medea. Other intimacy direction credits include Guthrie Theatre, San Diego Opera and Minnesota Opera. Directing credits include Minnesota Opera, Madison Opera, Austin Opera, Pittsburgh Opera and Park Square Theatre. He choreographed fights for the world premier of Silent Night at Minnesota Opera (which won a Pulitzer Prize for music) as well as productions for companies including New York City Opera, Kansas City Opera, Metropolitan Opera, Children's Theater Company and the Seattle Police Department. Doug is a graduate of St. Olaf College and the University of Washington.

Doug Scholz-Carlson, Chris Mixon, and Jonathan Gillard Daly in 2012's *King Lear*. Directed by James Edmondson. Photo by Dan Norman.





## 2023 COMPANY BIOS



**Tonia Sina** • Intimacy Director • GRSF Seasons: '21, '22

Tonia Sina is the first ever Specialty Intimacy Choreographer and created the term in her master's thesis at VCU. Along with teaching workshops internationally traveling with her service dog, Daphne Rose, she has choreographed intimacy at the Chicago Lyric Opera, Stratford Festival, and Steppenwolf Theatre. Featured in the NY Times, the LA Times, The Washington Post, American Theatre Magazine, CBC Radio, Huffington Post, and hundreds of other publications and podcasts, Tonia has been researching Intimacy for the Stage and Sexual Harassment in the industry since she began research for her thesis in 2004. Also a playwright and performer, Tonia is a triple kidney transplant recipient and rare and chronic disease patient advocate and national motivational speaker. She attended Virginia Commonwealth University where she studied movement and earned her MFA in Movement Pedagogy with a specialty in Intimacy for the Stage. This is her 5th year with GRSF, the first being the Front Porch Series in 2018.



**David Smith** • Master Electrician • GRSF Debut

David has been actively engaged in the art and technology of entertainment lighting for more than 20 years. In addition to his work as a designer and Master Electrician, David has developed additional specialties including wireless lighting systems, DMX and RDM implementations, and use of LEDs in various capacities. He has conducted training sessions for IATSE, touring professionals, and educational institutions as well as functioned as an on-site specialist and consultant for Broadway and regional shows, major tours, and international productions.



**Brittany Staudacher** • Costume Design Assistant • GRSF Debut

Brittany Staudacher (she/her) originates from Cedar Rapids, Iowa. She received her BA from the University of Northern Iowa and her MFA from Indiana University. Past theatres include Penobscot Theatre Co., Milwaukee Repertory Theatre, and Florida Repertory Theatre. Favorite design credits include Carrie the Musical, The Threepenny Opera, and Woody Guthrie's American Song. Brittany is thrilled to be joining the GRSF family this summer!



**Daniel Stewart** • Actor • GRSF Seasons: '18, '19

This will be Daniel's 3rd season at Great River Shakespeare festival and he is super excited to be back. Currently based in Texas, Daniel works as an actor with the Murder Mystery Theatre Company. He wants to thank the kind people of Winona for always being so welcoming.



**William Sturdivant** • Actor • GRSF Seasons: '19, '20, '21, '22

Will Sturdivant enters his fifth season with GRSF this Summer and is thrilled to be back in Winona. As You Like It will mark his 32nd Shakespeare production. He received a BFA from the University of MN/ Guthrie Theater Actor Training Program and has performed Off Broadway and regionally for the past 17 years. Information on his newest poetry book, "Bounty! a pilgrimage in process," can be found on his Facebook page @WillSturdivantPoetry.

# CULTURE COMMUNITY & ARTS

Proud supporter for over 25 years.



Internet | TV | Phone

(888) 474-9995 | [hbci.com](http://hbci.com)



## WNB FINANCIAL

MORE THAN A BANK

**Proud sponsor of \$12 Tuesdays**  
for the 2023 GRSF Season



**Subscribe to our YouTube channel**  
for helpful financial tips and exclusive content

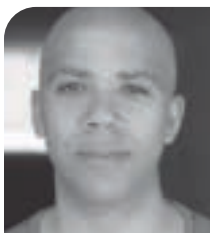
507-454-8800 • [WNBFinancial.com](http://WNBFinancial.com)

## 2023 COMPANY BIOS



**Madison Tarchala** • Production Stage Manager, Stage Manager *As You Like It* • GRSF Seasons: '18,'19,'21,'22

Madison Tarchala is thrilled to be returning to GRSF for her sixth year! Off-Broadway credits include *Misty*, *Help (The Shed)*. Regional credits include *Much Ado About Nothing* (Milwaukee Rep), *Our Town* (Baltimore Center Stage), *Great River Shakespeare Festival* Season '18,'19,'21,'22: *Always Patsy Cline*, *Great Expectations*, *Cymbeline*, *No Child*, and *A Midsummer's Dream*. Madison holds a BFA in Stage Management from UNC School of the Arts. Much love to Mom, Dad, and Alexander.



**Olivia Templeton** • Front of House Associate • GRSF Debut



**Chauncy Thomas** • Actor • GRSF Debut

Chauncy is thrilled to make his debut at Great River Shakespeare Festival. He graduated from Washington University in St. Louis and currently resides in New York. Selected Credits - Bay Street Theatre: *A Raisin in the Sun* (Walter Younger), *To Kill a Mockingbird* (Tom Robinson); Alabama Shakespeare Festival: *Our Town* (Mr. Webb), *The Tempest* (Caliban); St. Louis Shakespeare Festival: *Much Ado About Nothing* (Don Pedro), *The Winter's Tale* (Polixenes); Illinois Shakespeare Festival: *Measure for Measure* (Angelo), *Pride and Prejudice* (Mr. Bingley); Gulfshore Playhouse: *Radio Golf* (Roosevelt Hicks); St. Louis Rep: *Clybourne Park* (Albert/Kevin); Notre Dame Shakespeare Festival: *Romeo and Juliet* (Mercutio/Friar Laurence); Capital Repertory Theatre: *A Midsummer Night's Dream* (Oberon), *Wellfleet Harbor Actors Theater*: *Alabama Story* (Joshua Moore). He is a four-time St. Louis Circle Award nominee. He will next be seen in *A Midsummer Night's Dream* at Alabama Shakespeare Festival. Television: "Madam Secretary, Run the World."



**Kenyana Trambles** • Hair/Makeup Designer • GRSF Seasons: '22

Kenyana is a 27 year old Hair/Makeup Artist with a passion for the arts. She attended the University of Southern Indiana where she got her Bachelor of Arts Degree with a double emphasis in Hair/Makeup design and Performing Arts. She specializes in Beauty Makeup/Hairstyling but would like to further her skills in Special Effects Makeup. She has over 8 years experience in her field.



**Alejandro Treccani** • Drafter/Carpetner/Painter/Rigger • GRSF Debut  
Bio goes here

## 2023 COMPANY BIOS



**Ivy Treccani** • Props Designer/ Scenic Designer/Co-Technical Director • GRSF Seasons: '19,'21,'22

Ivy Treccani is a graduate from Northern Illinois University with her MFA in Scenic/ Props Design. Recently she was the Scenic Paint Designer for *Together at Last at The Second City*. She was the Props Designer at The Griffin Theatre Company for the North American Premiere of *Solaris* and *Mary Seacole's*. As well as the Props Designer for The Raven Theatre Company for *The Right to be Forgotten*. She also works part time as a scenic painter and props artisan at the Paramount Theatre in Aurora, IL. She is returning for her 4th season at Great River Shakespeare Festival.



**Timmy Turner** • Puppetry Consultant • GRSF Seasons: '20

Timmy Turner is a puppeteer based in Windsor, NC. He has worked alongside puppeteers and builders from the Henson Company, Project Puppet, and the Rose family (*Howdy Doody*), and helped build puppets for Disney's *Winnie the Pooh - The New Musical Stage Adaptation* in New York City. Timmy is a WSU alumni, and has called Winona home since 2011. He has been a long time attendee of GRSF and is thrilled to partner with the company every chance he gets.



**Erika Warrix** • Wardrobe Apprentice • GRSF Debut

Erika Warrix is from San Antonio, Texas. She's a junior Design, Technology and Management Technical Theatre major at Wagner College in NYC. She's so excited to be part of Great River Shakespeare Festival. Erika thanks her friends & family for all of their love & support!



**Caroline Wieland** • Wardrobe Supervisor • GRSF Debut

Carrie Wieland just graduated from Wright State University with a BFA in Theatre Design/Technology with a concentration in costume design. She works with the Limon Dance Company as a wardrobe supervisor and has worked as the costume designer for *La Boheme* at the Bar Harbor Music Festival. She is planning on working as a Wardrobe Supervisor with the Norwegian Cruise Line in the fall.



**Aaron A. Young** • Managing Director • GRSF Seasons: '17,'18,'19,'20,'21,'22

Aaron A. Young joined the leadership team of Great River Shakespeare Festival in 2017. Prior to moving to Winona, he spent 13 years as managing director of the Fulton Theatre Company in Lancaster, PA. He has also led the theatre program of Robert Redford's Sundance Institute and served as marketing manager for the Sundance Film Festival and as general manager of Kansas City Repertory Theatre. Aaron is a graduate of Brigham Young University, and along with his wife Kristen, a clawhammer banjo player, has raised three lovely and very tall daughters. He is happy to devote his career to connecting artists and audiences, making sure artists have meaningful dialogues with their communities, and seeing they earn living wages.



# SPONSORS

Great River Shakespeare Festival depends on sponsorship support to make its programs happen. Our deepest thanks go to the following 2023 sponsors:

## Season Co-Sponsors:



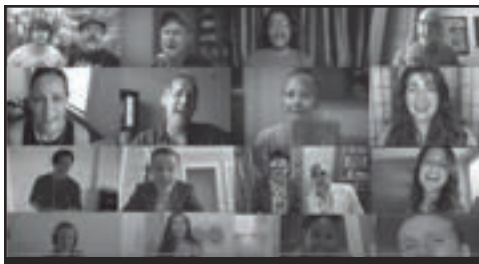
This activity is made possible by the voters of Minnesota through a grant from the Southeastern Minnesota Arts Council thanks to a legislative appropriation from the arts and cultural heritage fund.

## As You Like It Sponsor:

Kathy & Dave Christenson

## Imbroglia Sponsors:

An anonymous gift in memory of John & Janet and Char & Bill Carlson



The company of one of the many 2020 online gatherings with festival artists and audiences. Photo by Zoom.

## The Winter's Tale Sponsors:



## GRSF Youth Class Sponsors:



This activity is made possible by the voters of Minnesota through a grant from the Southeastern Minnesota Arts Council thanks to a legislative appropriation from the arts and cultural heritage fund.

With additional support from the Elizabeth Callender King Foundation

## \$12 Tuesday Sponsor:



## Box Office Sponsor:



## Technology Sponsor:



## Accessibility Services Sponsor:



## Green Show & Know Before You Go Sponsors:

Stephen Carmichael & Susan Stoddard

## Chill with Will Sponsor:



## Company Conversations Sponsors:

Greg & Terri Evans



WISCONSIN PUBLIC RADIO

## Post-show Talk-backs Sponsor:

Sally Sloan

## Ice Cream Social Sponsor:



## Pay-What-You-WILL Preview Sponsor:



## General Operating Support:

Festival-wide support comes from the Margaret H. and James E. Kelley Foundation and the Winona Foundation

Alex Givens, Anique Clements, and Michael Fitzpatrick in 2019's *Cymbeline*. Directed by Doug Scholz-Carlson. Photo by Dan Norman.



## THANK YOU TO OUR BUSINESS SPONSORS

The following businesses have supported Great River Shakespeare Festival with a donation this season. GRSF and its audiences generate more than \$1.3 million of economic activity in the Winona region every year.

*We encourage you to support the businesses in the area who support the arts.*

*Thank you to this generous group!*

102 Walnut Winona LLC  
 About Face Winona  
 Altra Federal Credit Union  
 Amazon Smile  
 American Legion Post #9 Winona  
 Ameriprise Financial  
 Bay State Milling Company  
 Blooming Grounds Coffee House  
 Carleton Liberal Arts Institute  
 Castlerock Museum  
 City of Winona  
 Commonweal Theatre  
 Dahl Toyota  
 Erbert & Gerbert's Sandwich Shop  
 Explore La Crosse  
 Fawcett Junker Funeral Home & Crematory  
 First Circle Design, Inc.

Floor Coverings of Winona  
 Fraternal Order of Eagles Aerie 1243  
 Frozen River Film Festival  
 Guthrie Theater  
 Hawkins Ash CPAs, LLP  
 HBC  
 Hoff Celebration of Life Center  
 Hy-Vee  
 Leighton Broadcasting  
 Medtronic Foundation  
 Merchants Bank  
 Midtown Foods  
 Miller Scrap  
 Minnesota Beethoven Festival  
 Minnesota Marine Art Museum  
 Minnesota Public Radio  
 Pac N Mail Express  
 Plaza Hotel & Suites  
 River Arts Alliance  
 RTP Company  
 Sandbar Storytelling Festival  
 Signatures  
 Spirit Gate Massage, LLC  
 Thern, Inc.  
 Thrivent Financial  
 Tri-State Business Machines, Incorporated  
 The Watkins Company  
 W.A. Group  
 Wells Fargo  
 Win Air Aviation Services  
 Winona Community Foundation  
 Winona County Historical Society  
 Winona Health  
 Winona Lions Clup  
 Winona Marina LLC  
 Winona State University  
 Winona Veterinary Hospital  
 Wisconsin Public Radio  
 WNB Financial  
 Yarnology

We Are  
Winona.

Here's our story.



Winona Health

## CONTRIBUTORS

Great River Shakespeare Festival gratefully acknowledges the financial and in-kind support of the 647 donors who make the festival possible each year. Donors are grouped by giving level based on total gifts received between Shakespeare's birthdays from year to year. The following listing of individuals, foundations, businesses, and governmental agencies represents gifts received between April 24, 2022 and April 23, 2023. We also extend our deepest gratitude to those who have given gifts since April 23 who will be acknowledged in our 2024 program.

### DIAMOND Giving Circle

#### Annual Giving of \$10,000 or more:

Anonymous gift in memory of John & Janet  
 Dave & Muriel Arnold  
 Char & Bill Carlson  
 Dave & Kathy Christenson  
 John and Margaret Cross Memorial Fund  
 of the Winona Community Foundation  
 Dahl Toyota & the Dahl Family Foundation  
 Elizabeth Callender King Foundation  
 HBC  
 Margaret H. & James E. Kelley Foundation, Inc.  
 Minnesota State Arts Board  
 Dan & Pat Rukavina  
 Southeastern Minnesota Arts Council  
 WNB Financial

Alan & Collette Leonhardt  
 Craig & Lori Pesik  
 Gaby & Brad Peterson  
 Sandy & Dick Pope  
 RTP Company  
 Lawrence J. Sinak & Anne Black-Sinak  
 Sally Sloan  
 Charlotte & John Speltz  
 Linda Wilfahrt  
 Winona Community Foundation  
 Winona Foundation  
 Miller Scrap  
 Karin & Jim Worthley

### RUBY Giving Circle

#### Annual Giving between \$5,000 - \$9,999:

Lonnie Alcaraz  
 Altra Federal Credit Union  
 Mary Alice Anderson  
 Mary Burchrichter & Bob Kierlin  
 Mary Christenson & Neil Hamrin  
 Greg & Terri Evans  
 First Circle Design, Inc.  
 Ann McLaren Helstad  
 Margaret & Bruce Johnson  
 Laurie R Lucas  
 Merchants Bank  
 Lawrence & Rill Ann Reuter  
 Susan Stabile & David Drueding  
 Thern Fund of the Winona Community Foundation  
 The Watkins Company

### SAPPHIRE Giving Circle

#### Annual Giving between \$1,000 - \$2,499:

Anonymous (2)  
 102 Walnut Winona LLC  
 Leslie Albers & Ed Thompson  
 Amadio Family Arts Fund  
 Margret & David Anderson  
 Marcia Aubineau  
 John & Tamsin Barlow  
 Lyle & Kris Blanchard  
 David & Julie Boen  
 Michael Bostwick & Constance Williams  
 Coleen & Thomas Bremer  
 Cheryl Cutsforth  
 Helen & Gary Delp  
 Daniel & Carolyn Flanagan  
 Fraternal Order of Eagles No. 1243  
 Kathie & Ken Geiger  
 Dan & Nancy Goltz  
 Candace Meyer Gordon  
 Maureen & Louis Guillou  
 Patricia Haswell & Richard Todd  
 Carol Heyl  
 Leslie & Jo Hittner  
 Sherry Jester & Harry Cloft  
 Drs. Amy Kotsenas & Ron Kuzo  
 Joshua & Sarah Lallaman

### EMERALD Giving Circle

#### Annual Giving between \$2,500 - \$4,999:

Kenneth Baughman & Leandra Sunseri  
 Margaret Lambert



Hazel Light  
 Tim & Bonnie McBeth  
 Jim & Diana Metzger  
 Tracy & Tedd Morgan  
 John & Marlene Mulrooney  
 William North & Victoria Morse  
 Dennis & Pat Nolan  
 Amaria & Patrick O'Leary  
 Scott & Kelley Olson  
 Greg & Kathy Peterson  
 Martin Pflughoeft  
 Paul & Joan Schoenfeld  
 Cora Scholz  
 Thomas & Sarah Scott  
 Ron & Diane Stevens  
 Rebecca & Stephen Stolz Charitable Fund, a  
 Donor Advised Fund of U.S. Charitable Gift Trust  
 Cindy & LeRoy Telstad  
 United Health Group  
 Amy & Phil Watson & Family  
 Jim Williams & Heather Williams-Williams  
 Win Air Aviation Services  
 Winona Health

## PLATINUM Giving Circle

**Annual Giving between \$500 - \$999:**

Anonymous (1)  
 American Legion Post #9 Winona  
 Bob & Carrie Arnold  
 Roderick S. Baker & Moira A. Corcoran  
 Kathy & Brad Benke  
 Blooming Grounds Coffee House  
 Alastair Boake & Nancy Vrabec  
 Barb Burchill  
 Vicki & Ross Chaney  
 Francine Corcoran  
 Cassie & Dan Cramer  
 Jennifer Anderson & David Crawford  
 Bob & Marj Deter  
 Gary Diomandes  
 Robert & Susan Edel  
 Sara & Karl Fiegenschuh  
 Kent Gernander & Elizabeth Burke  
 Sue Hahn/Hahn Charitable Fund of the  
 Winona Community Foundation  
 Cherie Hales  
 Steve & Anne Hayes Fund at Vanguard Charitable

Hoff Celebration of Life Center  
 Kathy Hovell & Tom Slaggie  
 Dennis & Yvonne Johnson  
 Sarah Johnson  
 Doug & Mary Jones  
 Bob & Marlene Kohner  
 Colleen & Dan Koll  
 Maureen & Patrick Marek  
 Deborah K. McKnight & James Alt  
 Gloria McVay  
 Ken & Sally Mogren  
 Bert & Marge Mohs  
 Paul Mundt  
 Patti & Gerry Neal  
 Carole Nelson  
 Douglas Nopar & JoAnn Thomas  
 Mary & Hugh Polus  
 Robert & Cheryl Roediger  
 Laura & Jim Sell  
 Debbie Sheets  
 Chuck & Judy Shepard  
 Ronald Spiegel  
 Mary Steinbicker  
 Tom & Christine Stoa  
 Terre & Ken Sullivan & Friends of Will Eau Claire  
 Thrivent Financial  
 Sandra Todd  
 Jim & Diane Wagner  
 Winona State University

## GOLD Giving Circle

**Annual Giving between \$250 - \$499:**

Anonymous (4)  
 Karen Acker  
 Briggs Family  
 John Campbell & Colette Hyman  
 Michael & Lori Charron  
 George Cipov  
 Robert Clay  
 Jon & Christine DeVries  
 Dick & Carol Eick  
 Einhorn Family  
 Vicki English  
 Tarah Flanagan & Christopher Gerson  
 Jeannine Flick  
 Leslie Foote  
 Leland & Beverly Gehrke  
 Regina Harris

## CONTRIBUTORS

Hawkins Ash CPAs, LLP  
 Gary & Jean Hayes  
 Jenni McHugh & Jack Hedinn  
 Tom & Bea Hoffmann  
 Joshua & Cheryl Hunter  
 Clare & Shari Jarvis  
 Barbara Jenkins  
 Larry & Anne Jost  
 Ray & Margaret Kihne  
 Laurie & Fred Krause  
 Virginia & Keith Laken  
 Mary Ellen & Dick Landwehr  
 Martha & John Langowski  
 Celeste Lea & Sam Liesch  
 Herbert V. & Lauren S. Leighton  
 David & Ruth Marshall  
 Bill Moe & Beth Forkner Moe  
 The Moeller Family  
 Beth Moore  
 Jonelle Moore  
 Mike Mutschelknaus & Cherisa Broadwater  
 Pat & Jay Mutter  
 Jerome & Judy Nadler  
 Debi Niebuhr  
 Kathleen O'Rourke  
 Sheri Lu Pappas  
 Edward & Gwen Paulson  
 Jim & June Reineke  
 Polly Renk  
 Dan Rohe  
 Wendy Sandvig  
 Jeri V Sebo  
 Peter Shortridge & Amy Nankivil  
 Laura Silver & Jeff Hertzberg  
 Brian & Betty Singer-Towns  
 Paul & Jeanne Skattum  
 Mark & Lynn Smith  
 Linnea Sodergren  
 Ardath Solsrud  
 Jim Stoa & Gail Christiaansen  
 Kenneth & Catherine Tuggle  
 Anne Marie & Mark Wagner  
 Steve & Maggie Wasz  
 The family of Judy Whetstone  
 Brian White & Laura Napoli  
 Debra Wilk  
 W.A. Group  
 Aaron & Kristen Young

Robert Youngerman  
 Laurie Ziliak & Todd Graff

## SILVER Giving Circle

**Annual Giving between \$100 - \$249**

Anonymous (7)  
 About Face Winona  
 Mary Adams  
 Amazon Smile  
 Jan Ambuhl  
 Artist, Muse, Lover of Theater  
 Steve Bachman  
 Kathleen Barber  
 Thomas Barnes & Beth Hennessy  
 Bay State Milling Company  
 Larry & Mary Bergin  
 Allan & Judith Bernstein  
 Robert & Linda Birnbaum  
 Patricia Boge  
 Lara Bolton  
 Dianne Bone  
 Mercedes Borzyskowski  
 Benjamin Boucvalt & Valerie Lynn Brett  
 Judy Broske  
 Nancy Brown  
 Bucknam Family  
 Frank & Ruth Bures  
 Collette Carras  
 Dave & Emily Casey  
 Margaret Cassidy  
 Colleen Cenfield  
 Pauline Christensen  
 Patrick & Brittany Clipsham  
 Joan & H. Pat Costello  
 Don & Sandra Curtin  
 The Darnley Family  
 Judith Davis  
 Monica & Emilio DeGrazia  
 Ron Deike  
 Mary DeMaine  
 Arty & Coleen Dorman  
 Michael W. Doyle  
 Carolyn Dry  
 Beth DuBord  
 Barbara DuFresne  
 Alan & Ann-Marie Dunbar  
 Dr. Wanda DuCharme & Edd Storey  
 Holly & Pat Egge  
 Jim & Gretchen Erwin  
 Gary & Ellen Evans  
 Susan Sawyer Evans  
 Mary & Jim Faircloth  
 Judith Fallat

## CONTRIBUTORS

Fassbender Family  
 Fawcett Junker Funeral Home & Crematory  
 Ray W. & Carolyn W. Felton  
 Kerri Ferstl  
 Lisa Finnegan  
 Margaret Fiser  
 Richard & Sharon Flatten  
 Paul & Mary Flicek  
 Diane McNally Forsyth  
 Mary & Justin Galke  
 Fran Galt  
 Beth Gardiner  
 Cynthia L. Gardiner  
 Rick & Gayle Garrity  
 Gayle Gaskill  
 Gayle Goetzman-Stolpa  
 Bob Wilfahrt & Lisa Gray  
 Jon & Sharon Grossardt  
 Mr. & Mrs. Edward Guernica  
 Alan & Jolene Hansen  
 M. Patrick Harty  
 Julie Hebert  
 Clair John Helgeland & Humberto Huerdo  
 Rebecca Heroff  
 Barbara & Glen Herrington-Hall  
 Jonathan E. Hill  
 Gordon Hoffert & Ulrike Schorn Hoffert  
 Hayley & Scott Hornberg  
 Paula Horner  
 Gail Huschle  
 HyVee  
 Kathy Jaszewski  
 Sharon & Alfred Kauth  
 Joyce & Charles Roy Kenagy  
 Cynthia Klabacka  
 Sara, Ryan & Oliver Kling-Punt  
 Larry Klueh  
 Kim Knutson

Tom & Joann Kujawa  
 Dave Larson  
 Lloyd & Mimi Law  
 Jane Lentz  
 Dr. Jonathan Locust, Jr.  
 Lee & Ione Loerch  
 Rich & Ann MacDonald  
 Terese Tenseth  
 Dan & Natalie Matejka  
 Melissa Maxwell  
 Medtronic Foundation  
 Midtown Foods  
 Linda K. Miller  
 Paul & Nancy Mueller  
 Barbara & Steve Nagel  
 Bruce Neitzke  
 Jim & Robyn Nelson  
 Joseph Nix  
 Elizabeth O'Berry  
 Carolyn O'Grady & Jim Bonilla  
 Denis & Lynette O'Pray  
 Jodi Dansingburg & Kevin O'Brien  
 Merritt Olsen  
 Elizabeth Beery Olson  
 Glenn Morehouse Olson  
 Jon & Betsy Olson  
 Patty & Darren Omoth  
 Steven & Karen Ostovich  
 Pac N Mail Express  
 Beth Pekar  
 Anne Scott Plummer & Taff Roberts  
 Cynthia Porter  
 Lynn Reuvers  
 James & Nancy Reynolds  
 Jeanne Rice  
 Ann Ringlien  
 River Arts Alliance  
 Don & Lori Rivers  
 Louise Robinson & Neal Cuthbert  
 Thomas J & Gwynn Rosen  
 Mike & Jennifer Rupprecht

Lance & Barbara Rygmyr  
 Mary Schneider  
 Doug Scholz-Carlson  
 Marilyn Schwab  
 Jeff & Joicelyn Schwager  
 Michael Schwalbe  
 Kathy Seifert & Bob Pflughoeft  
 Terry Shima  
 Richard J. Staff  
 Mary & Andrew Stutesman  
 Virginia Sundberg  
 Dr. Rhiannon Talbot  
 Del & Lois Tesch  
 Tom & Debbie Thompson  
 Susan Tower  
 Jill V. Trescott & Leo Reid  
 Tri-State Business Machines, Inc.  
 Paul Valenti  
 Jacqueline Vanhoutte  
 The van Schaik-Iremonger Family  
 David Vessey  
 Susan & Robert Warde  
 Wells Fargo  
 Andrew Westreich & Sandra Taler  
 Janette Williams  
 Winona Marina  
 Winona Senior High School  
 Winona Veterinary Hospital

### BRONZE Giving Circle Annual Giving up to \$99

We extend our deepest thanks to the 274 Bronze Giving Circle donors who cannot be individually recognized because of space limitations.

The company of 2012's *The Two Gentlemen of Verona*.  
 Directed by Paul Barnes. Photo by Michal Daniel.



**THE PLAZA**  
HOTEL & SUITES  
WINDON, WISCONSIN

- FREE Express Breakfast
- River City Grill On Site
- Pet Friendly

**River City GRILL**

- American/Italian Cuisine
- Farm To Table Selections
- On Site of The Plaza

Largest Water Recreation Area with Kiddie Pool  
 Across parking lot from Holiday Inn Express

507-453-0303  
[www.plazawinona.com](http://www.plazawinona.com)  
 HWYS 61 & 43 WINONA, MN

507-452-5400  
[www.rivercitybargrill.com](http://www.rivercitybargrill.com)  
 HWYS 61 & 43 WINONA, MN

**Holiday Inn Express**

- FREE Express Breakfast Bar
- Indoor Pool/Hot Tub/Kiddie Pool
- Whirlpool Rooms/Sauna
- Pet Friendly

Completely Renovated in 2021  
 Across parking lot from River City Grill

507-474-1700  
[www.hiexpress.com](http://www.hiexpress.com)  
 HWYS 61 & 43 WINONA, MN

**Express Suites**

- FREE Hot Deluxe Breakfast!
- Indoor Pool/Hot Tub!
- Poolside Rooms & Suites!
- University Parents Rates
- Pet Friendly

507-452-0606  
[www.riverportinn.com](http://www.riverportinn.com)  
 HWYS 61 & 43 WINONA, MN

**Fairfield**  
BY MARRIOTT

- Indoor Pool/Hot Tub
- Fitness Center
- Pet Friendly
- Meeting Room Available

FREE HOT Breakfast!

507-474-2500  
[www.marriott.com](http://www.marriott.com)  
 HWYS 61 & 43 WINONA, MN

**Brewski's**  
Pub & Grill  
WINONA, MN

- All Items from Fresh Ingredients •
- Pizza • Wings • Specialty Burgers • Salads
- Specialty Beers & Drink Specials

Located in Express Suites & next to Fairfield Inn

• WINONA TOUR BOAT on the Mississippi River •  
 507-458-2842 • Daily River Cruises • Private Parties

WinonaTourBoat.com - or inquire at hotels



## GIFTS IN MEMORY & HONOR OF DEAR ONES .....

We extend thanks to those who have left gifts to honor/remember loved ones. This list represents gifts received between May 28, 2022 and June 5, 2023. Gifts received after June 5 will be recognized in the 2024 program.

**In memory of Doris Bird**  
Thomas Bird

**In memory of John M. Borzyskowski**  
Mercedes Borzyskowski

**In honor of Professor Andrew Carlson**  
William North & Victoria Morse

**In honor of Andrew Carlson and Family**  
Terre & Ken Sullivan & Friends of Will Eau Claire

**In memory of Walt & Marian Carroll**  
Marian Hopkins

**In memory of Dee Cipov**  
Anonymous  
Don & Sandra Curtin

**In memory of Marilyn Duellman**  
Vicki & Ross Chaney

**In memory of Robert Fallat**  
Judith Fallat

**In memory of Karen Fawcett**  
Pat & Jay Mutter

**In honor of Tarah Flanagan & Chris Gerson**  
Anonymous  
The Darnley Family  
Daniel & Carolyn Flanagan

**In memory of Peter Flick**  
Anonymous  
Karen Acker  
Travis Brouillard  
Chuck & Carla Callies  
George Cipov  
Paul & Rosanne Flick

Leslie Foote  
Lloyd & Mimi Law  
Jane Lentz  
Gloria McVay

Pat & Jay Mutter  
Brian & Betsy Neil  
Bradford & Bonita Wedge  
Brian White & Laura Napoli

**In honor of Leah Gabriel**  
Bob & Carrie Arnold

**In memory of Michael Gerson**

Mary Alice Anderson  
Marcia Aubineau  
Gary Diomandes  
Tom & Bea Hoffmann  
Bill Moe & Beth Forkner Moe  
Paul Mundt  
Scott & Kelley Olson  
Gaby & Brad Peterson  
Ron & Diane Stevens

**In honor of Karl Gfall**  
Mark P. Helling

**In honor of Pierre Hecker**  
William North & Victoria Morse

**In honor of Kathy Hovell & Tom Slaggie**  
Don & Sandra Curtin

**In memory of Sydney Kohner**  
Bob & Marlene Kohner

**In honor of Keith & Virginia Laken**  
Dan Rohe

**In memory of Santo & Frances Manco**  
Tom & Joann Kujawa

**In honor of Melissa Maxwell**  
Anonymous

**In memory of Robert Raz PhD**  
Jean Raz

**In memory of John W. Rice**  
Jeanne Rice

**On behalf of Diane Stevens**  
Anonymous

**In memory of George and Elizabeth Watson**  
Amy & Phil Watson & Family

**In memory of Barbara Williams**  
Ron & Diane Stevens

*"Yourself, assisted with your honour'd friends,"  
The Winter's Tale: V,i*

## GRSF LEGACY SOCIETY

We would like to thank the following individuals who are enuring the future of the Great River Shakespeare Festival by designating the Festival in their estate plans:

**Mary Alice Anderson  
Marcia Aubineau  
Kenneth Baughman & Leandra Sunseri  
Stephen Carmichael & Susan Stoddard  
Candace Meyer Gordon  
Dan & Pat Rukavina  
Sally Sloan  
Jim Stoa & Gail Christiaansen  
Tom & Christine Stoa**

If you would like to consider making a planned gift, please contact Development Director Brittany Clipsham at (507) 474-9376 or [development@grsf.org](mailto:development@grsf.org)

## SEASON THANK YOU'S

- Carew Halleck & Mugby Junction for the cationation
- Carolyn O'Grady for weekly office help
- Greg and Kathy Peterson for leading the Collegium
- Pioneer Theatre Company in Salt Lake City for the loan of costumes
- St Mary's University for the loan of risers, chairs, stage decking, and lighting equipment
- Winona State University Theater department for the use of the facility and the loan of so much equipment.
- Isaac Sawle for professional TD guidance.
- Restored Blessings in Winona for showering us with vintage clothing and fabrics.
- Westgate Bowling and No Name Bar for late night entertainment.
- Friends of Will and so many other community volunteers for helping us move.



Adeyinka Adebola and the company of 2022's  
The African Company Presents Richard III.  
Directed by Corey Allen. Photo by Lloyd Mulvey.

**FEEL LIKE YOU'RE HOME.  
EVEN WHEN YOU'RE NOT.**

- \* Ask for Shakespeare rate
- \* Free hot, breakfast
- \* Free hotel-wide, high-speed internet
- \* Indoor heated pool and hot tub
- \* Pelzer Pub
- \* Earn & Redeem Wyndham Rewards

AmericInn by Wyndham  
303 Pelzer St | Winona, MN 55987  
**507.474.7700**

**AmericInn**  
BY WYNDHAM



The company of 2006's *The Merchant of Venice*.  
Directed by Paul Barnes. Photo by Alec Wild.



**We want to  
connect you  
with the causes  
you love.**

CONTACT US DIRECTLY TO LEARN MORE!

(507) 454 - 6511

wcf@winonacf.org

www.winonacf.org



111 Riverfront Suite 2E  
Winona, MN 55987



## ADMINISTRATIVE STAFF

### YEAR-ROUND TEAM

- Lonnie Rafael Alcaraz** | Co-associate Artistic Director
- Brittany Clipsham** | Director of Development
- Kris Hippi** | Finance Associate
- Melissa Maxwell** | Co-Associate Artistic Director
- Doug Scholz-Carlson** | Artistic Director
- Aaron A. Young** | Managing Director

### SEASONAL TEAM

- Emma Bucknam** | Box Office Manager
- Marisa Dean** | Marketing Apprentice
- Pedro Oliveira Figueiredo** | Video Apprentice
- Viva Graff** | Company Manager
- Willa Kruse** | Box Office Associate
- Jovita Light** | Front of House Associate
- Bridget McCarthy** | Mental Health Coordinator
- Ava Ringlien** | Box Office Associate
- Dayne Sabatos** | Front of House Associate
- Amanda Salazar** | Mental Health Coordinator, Director of Inclusion and Belonging, Infection Control Specialist
- Carl Schack** | Box Office Manager
- Liv Templeton** | Front of House Associate

## EDUCATIONAL STAFF

- Andrew Carlson** | Lead Teacher Shakespeare for Young Designers
- Michael Fitzpatrick** | Teaching Artist Shakespeare for Young Actors
- Tarah Flanagan** | Lead Teacher Shakespeare for Young Actors
- Maya Lavin** | Education Apprentice
- Kacie Mixon** | Lead Teacher Will's Power Players and Will's Creative Drama



## GRSF BOARD OF DIRECTORS

### BOARD CHAIR

**Beth Forkner Moe**  
CEO, Envision It Together

### VICE-CHAIR

**Kris Blanchard**  
Vice President, VA CCN Deputy Program Manager,  
Logistics Health, Inc.

### TREASURER

**Alan Leonhardt**  
CFO, Peerless Chain – retired

### SECRETARY

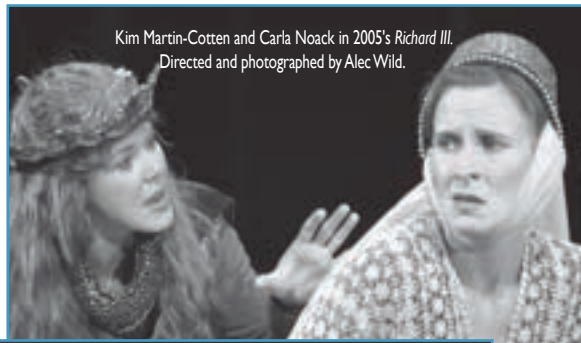
**Mary Alice Anderson**, Media Specialist,  
Winona Area Public Schools – retired

### DIRECTORS

- Marcia Aubineau**, Teacher – retired
- Cherisa Broadwater**, Owner, Cherisa's Skin Care Spa;  
Adjunct Professor, Minnesota State College Southeast
- Michael Charron**, Executive Director of Grants  
& Sponsored Programs, Saint Mary's University of  
Minnesota – retired
- Dr. Joyati Debnath**, Professor Mathematics, Winona  
State University
- Gary Diomandes**, Theater Professor Emeritus, Saint  
Mary's University of Minnesota
- Haley Fast Hornberg**, Digital Marketing & Content  
Strategist, Merchants Bank
- Dr. Jonathan Locust, Jr.**, Associate Vice President,  
WSU Office of Equity & Inclusive Excellence
- Paul Mundt**, Attorney, Legal Aid – retired
- Amaria O'Leary**, Librarian, retired; Arts Volunteer  
& Docent
- Kelley Olson**, Philanthropy Director, Lutheran  
Campus Center
- Gaby Peterson**, Owner, Yarnology
- Mary Polus**, SVP, Chief Technology Officer, WNB  
Financial
- Jim Stoa**, Business Owner – retired



Kim Martin-Cotten and Carla Noack in 2005's *Richard III*.  
Directed and photographed by Alec Wild.



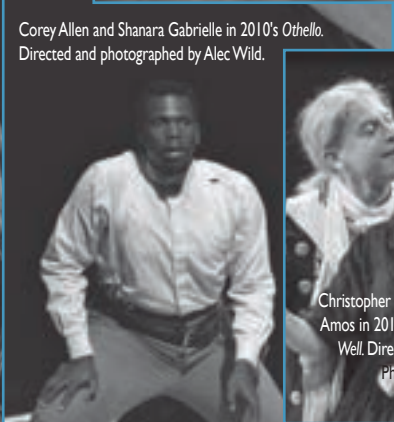
Michael Fitzpatrick, Benjamin Boucvalt, and Tarah Flanagan in 2015's *Romeo & Juliet*. Directed by Doug Scholz-Carlson. Photo by Dan Norman.



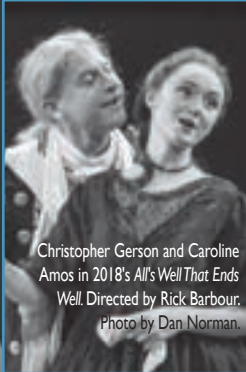
Christopher Gerson and Laura Coover in 2007's *Macbeth*.  
Directed by Doug Scholz-Carlson. Photo by Alec Wild.



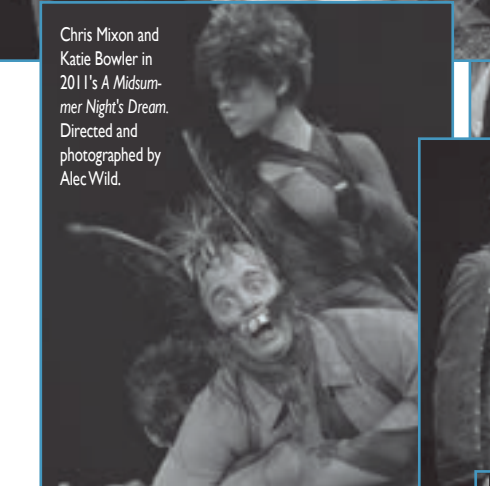
Corey Allen and Shanara Gabrielle in 2010's *Othello*.  
Directed and photographed by Alec Wild.



Christopher Gerson and Caroline Amos in 2018's *All's Well That Ends Well*. Directed by Rick Barbour.  
Photo by Dan Norman.



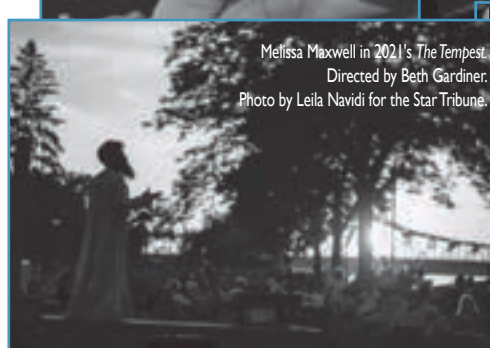
Chris Mixon and Katie Bowler in 2011's *A Midsummer Night's Dream*.  
Directed and photographed by Alec Wild.



Benjamin Boucvalt and Melissa Maxwell in 2017's *Richard III*. Directed by Doug Scholz-Carlson.  
Photo by Dan Norman.



Melissa Maxwell in 2021's *The Tempest*.  
Directed by Beth Gardiner.  
Photo by Leila Navidi for the Star Tribune.

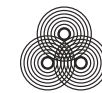


The company of 2013's *Henry V*.  
Directed by James Edmondson. Photo by Michal Daniel.



## No radio? No problem.

Get your news, music and entertainment anytime at [wpr.org](http://wpr.org), with the WPR app or on your smart speaker.



WISCONSIN  
PUBLIC RADIO



Illustration by Irene Rinaldi/NPR

